



Daily Programme

Tuesday, 26 November 2024

Tonight: Smart Attire

Queen Anne Voyage H429

Weather: 17°C (62.2°F) Sunny intervals

Sunrise 8.09am Sunset 6.07pm

and a gentle breeze

Time zone: GMT+1

In the port of Gibraltar, UK



Arrival time: 8.00am | All aboard time: 7.00pm

Port Highlights



Gibraltar is a British Overseas Territory and city located at the southern tip of the Iberian Peninsula, on the Bay of Gibraltar, near the exit of the Mediterranean Sea into the Atlantic Ocean (Strait of Gibraltar). The landscape is dominated by the Rock of Gibraltar, at the foot of which is a densely populated town area, primarily Gibraltarians. Gibraltar was founded as a permanent watchtower by the Almohads in 1160. It switched control between the Nasrids, Castilians and Marinids in the Late Middle Ages, acquiring larger strategic clout upon the destruction of nearby Algeciras c. 1375. During the War of the Spanish Succession, it was ceded to Great Britain in perpetuity under the Treaty of Utrecht in 1713. It became an important base for the Royal Navy, particularly during the Napoleonic Wars and World War II, as it controlled the narrow entrance and exit to the Mediterranean Sea, the Strait of Gibraltar, with half the world's seaborne trade passing through it. Today, Gibraltar Harbour is the gateway to the city's interesting origin story, rich history, and modern culture. Just a short walk from the main town, the port village showcases a true representation of the Gibraltarian land.

Shore Experiences

The following shore experiences will be meeting ashore at the quay side, in the bus parking area. We kindly ask that you make your way ashore at the meeting times listed below. Kindly have your tour tickets ready to show to the Shore Experience team.

Meet at the pier ashore

8.20am	001A	The Rock Revealed
8.20am	043A	Taxi Tour of the Rock
8.50am	018A	Dolphin Watch
8.50am	060A	Royal Ways and Canapés at The Mayor's Parlour
9.20am	061A	Exclusive WW2 Operation Torch Tunnels
10.50am	004A	Alameda Gardens and Cable Car
10.50am	009A	Secrets of the Rock
10.50am	019A	Fortress Gibraltar
10.50am	051A	Panoramic Gibraltar & Wine Tasting
11.20am	002A	Panoramic Gibraltar with English Tea

We kindly ask you not to attend any earlier than the advertised time as the transportation won't be ready and there will be no available seating. All shore experience transportation will have your shore experience stated in the front window. Please check before boarding your transportation or if unsure please ask a member of the shore experience team.

Please note it may be necessary to walk some distance to reach your mode of transport for your designated shore experience.

We are pleased to advise that we do offer water for purchase in Carinthia Lounge on Deck 3, Midship to take on your designated shore experience.

Port Shuttle Service

Due to Gibraltar being a Taxi Union Port, Cunard are unable to provide a complimentary shuttle bus service. However, the port offers a local payable shuttle that runs between Queen Anne and Casemates Square. Information regarding this service can be found inside the terminal, The transfer time is approximately 10 minutes each way which is subject to local traffic conditions on the day. Please understand that there may be queues at peak periods so, we ask that you plan your day accordingly.

Ship's Security Notice

In order to prevent unauthorised persons boarding the ship, you are required to carry your guest identification card with you when going ashore.

You will be asked to produce this at the gangway when you leave and return to the ship. Be aware that we have established a secure area around the vessel and our security procedures require that you must be prepared to show your guest identification card when entering this area, in addition to showing it to the Security Staff at the gangway when leaving or boarding the ship.

We kindly ask you not to accept and bring on board any parcels or packages from strangers. Before boarding the ship, you may also be asked by our Security Staff to open parcels or handbags which you are carrying. We are sure that you will appreciate that this security is in the best interest of all concerned.

Smoking policy

For the safety, comfort and enjoyment of our guests, smoking (including electronic alternatives) is not permitted in staterooms, on stateroom balconies or in public rooms. You will find a designated smoking area on Deck 14, portside, forward of the Sky Bar, accessed via Stairway A. Smokers should not drift beyond this point. The only exception to this is Churchill's Cigar Lounge, which is reserved for cigar and pipe smokers only. This policy is designed through direct feedback from our guests and is for the safety and comfort of all guests.

Wheelchair Assistance

Guests are kindly reminded that wheelchair assistance, if required, will be provided to assist guests on and off the gangway only. As per the terms and conditions stated in the Cunard brochure, guests must be able to make their own way to the transportation on the pier or be accompanied by a travel companion who is able to assist them.

Pictures at the Pavilion: BFI's 'Creature'

Oscar-winning director Asif Kapadia's stunning collaboration with acclaimed choreographer Akram Khan captures the acclaimed English National Ballet production, which draws upon Georg Büchner's expressionist classic Woyzeck, as well as elements of Mary Shelley's Frankenstein, to contemplate themes of alienation, impossible love and the desire to belong.

9.00pm, The Pavilion, Decks 9 & 10, Midship



Today's Activities

Morning - Evening 9.00am - 7.15pm

Afternoon Tea with the Sunrise Strings

3.00pm, Queens Room, Deck 2, Midship

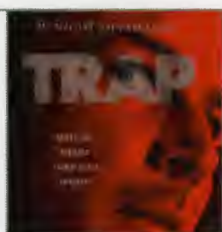
- 9.00am Christian Fellowship Gathering (unhosted) - Admiral's Lounge, Deck 12, Forward
- 9.30am Solo Travellers Meeting Point - Chart Room, Deck 2, Midship
- 10.00am Morning Trivia - Golden Lion, Deck 2, Forward
- 11.00am Golf Darts Competition Golden Lion, Deck 2, Forward
- 1.00pm Video Game Free Play: PS5 & Nintendo Switch - Bright Lights Society, Deck 2, Forward
- 2.00pm Movie: Trap - Royal Court Theatre, Decks 2 & 3, Forward
- 3.00pm Afternoon Tea with the Sunrise Strings - Queens Room, Deck 2, Midship
- 3.15pm Stop the Clock Trivia - Golden Lion, Deck 2, Forward
- 4.30pm Music on Deck with Solo Musician John Salzano - Panorama Pool Club, Deck 9, Aft
- 4.45pm Afternoon Trivia - Golden Lion, Deck 2, Forward
- 5.00pm Friends of Bill W. - Admiral's Lounge, Deck 12, Forward
- 5.00pm Solo Travellers Get Together (unhosted) - Chart Room, Deck 2, Midship
- 5.15pm Live Music: Sunrise Strings - Commodore Club, Deck 12, Forward
- 5.15pm LGBTQ+ Social Hour - Commodore Club, Deck 12, Forward
- 5.30pm Music on Deck with SouthEast 9 - Panorama Pool Club, Deck 9, Aft
- 7.00pm Live Music: SouthEast 9 - Queens Room, Deck 2, Midship (Until 8.30pm)
- 7.15pm Doors open for Bright Lights Society: Fizz - Bright Lights Society, Deck 2, Forward
- 7.15pm Live Music: Solo Musician John Salzano - Chart Room, Deck 2, Midship
- 7.15pm Live Music: Sunrise Strings - Commodore Club, Deck 12, Forward

Today's Movie: Trap

A father and his teen daughter attend a pop concert only to realise they've entered the centre of a dark and sinister event.

Duration: 1hour 45minutes Rated: PG-13

2.00pm, Royal Court Theatre, Decks 2 & 3, Forward



Music on Deck with SouthEast 9

Join us on deck as the sun sets and let the rhythms of this dynamic duo take you on a journey across the waves. Enjoy the fresh sea breeze, stunning views, and the magic of live music as SouthEast 9 sets the perfect soundtrack for your adventure.

5.30pm, Panorama Pool Club, Deck 9, Aft

MAREEL

WELLNESS & BEAUTY

- 7.00am Sunrise Stretch - The Pavilion Wellness Studio, Deck 11, Midship
 - 8.00am Shellac Nails - Mareel Wellness & Beauty, Deck 1, Forward
 - 8.00am Spatopia Special - Mareel Wellness & Beauty, Deck 1, Forward
 - 8.00am Slow Flow Yoga - The Pavilion Wellness Studio, Deck 11, Midship (\$)
 - 9.00am Full Cycle - Mareel Fitness Centre, Deck 1, Forward (\$)
 - 11.00am Goodfeet: Better posture and alignment - Mareel Fitness Centre, Deck 1, Forward
 - 3.00pm Bright Eyes - Mareel Wellness & Beauty, Deck 1, Forward
 - 4.00pm Arthritis and back pain solutions - Mareel Wellness & Beauty, Deck 1, Forward
 - 4.00pm Total tone pilates - The Pavilion Wellness Studio, Deck 11, Midship (\$)
 - 4.30pm Facial rejuvenation walk-in clinic - Mareel Wellness & Beauty, Deck 1, Forward
 - 5.00pm Sunset Stretch - The Pavilion Wellness Studio, Deck 11, Midship
 - 5.30pm Walk-in footprint clinic - Mareel Fitness Centre, Deck 1, Forward
- (\$) A fee applies

Live Entertainment

Cunard Insights

Learn Something New

Social Gatherings

Let's Play

Something Special

Evening 8.00pm - Late

A Night at the Commodore with Lyn Lawrence

9.00pm, Commodore Club, Deck 12, Forward

- 8.00pm Showtime: Danielle Grace Williams - Royal Court Theatre, Decks 2 & 3, Forward
- 8.00pm Live Music: The Full Set - Golden Lion, Deck 2, Forward
- 8.45pm Latin Fever with the Queens Room Musicians - Queens Room, Deck 2, Midship
- 8.45pm Live Music: Solo Musician John Salzano - Chart Room, Deck 2, Midship
- 9.00pm A Night at the Commodore with Lyn Lawrence - Commodore Club, Deck 12, Forward
- 9.00pm Pictures at the Pavilion: BFI's 'Creature' - The Pavilion, Decks 9 & 10, Midship
- 9.00pm 80s Music Trivia - Golden Lion, Deck 2, Forward
- 9.30pm Doors open for Bright Lights Society: Fizz - Bright Lights Society, Deck 2, Forward
- 9.45pm Live Music: The Full Set - Golden Lion, Deck 2, Forward
- 10.15pm Showtime: Danielle Grace Williams - Royal Court Theatre, Decks 2 & 3, Forward
- 10.30pm Wipeout Trivia - Golden Lion, Deck 2, Forward
- 10.45pm Jukebox Jive with DJ Mark - Bright Lights Society, Deck 2, Forward
- 11.00pm Live Music: The Full Set - Golden Lion, Deck 2, Forward
- 11.30pm Bright Lights After Dark with DJ Mark - Bright Lights Society, Deck 2, Forward



Bright Lights Society Presents: Fizz

You are exclusively invited to the most extravagant party in town! Meet your host, Monsieur Laurent, and the fabulous characters he surrounds himself with. Enjoy a sparkling evening of live music, stunning vocals and burlesque dance during a night you will not forget. Bringing the world of immersive cabaret to the high seas, welcome to Fizz.

Spaces available for 26, 28, 29 & 30 November

Please book this show through My Voyage or on 38000.

Showtime: Danielle Grace Williams

Danielle Grace Williams is an award-winning performer whose efforts have been recognised throughout the music industry for her continuous dedication to live performance. She has performed at the prestigious London Palladium, on ITV and the BBC. In her captivating one woman show, you will hear stunning David Foster inspired arrangements performed by Roberta Flack, Etta James, Whitney Houston, Chaka Khan, Luther Vandross, Prince and many more.

Presented by Entertainment Director, Neil Kelly.

8.00pm & 10.15pm, Royal Court Theatre, Decks 2 & 3, Forward



Latin Fever with the Queens Room Musicians

Feel inspired to dance to hypnotic Latin and Salsa rhythms, as your feet tap and your hips sway to the music of Gloria Estefan, Ricky Martin, Donna Summer, Shakira, Enrique Iglesias, and many more.

8.45pm, Queens Room, Deck 2, Midship

80s Music Trivia

From dance-able pop music, techno sounds, hair bands to Rock'n'Roll, join the Entertainment Team in the Golden Lion to test your music knowledge on some of the 80s greatest hits.

9.00pm, Golden Lion, Deck 2, Forward



SHOPPING

- 8.00pm Fope, The Journey of Italian Craftmanship - Fine Jewellery Boutique, Deck 3
- 8.00pm Price Match Guarantee - Queens Room & Grand Lobby Boutiques, Deck 3
- 8.00pm Maximise your Liquor Allowance - Liquor and Tobacco Boutique, Deck 3
- 8.00pm Tax & Duty Free Shopping - Queens Room & Grand Lobby Boutiques, Deck 3

Tonight's dress code: Smart Attire

What to Wear: Smart Attire

From 6.00pm on board, we request you wear collared shirt and trousers, top and skirt or stylish trousers, or a dress. It should be noted that the dress code will be enforced in the Britannia Restaurants and Britannia Club as well as Queens Grill and Princess Grill. Some Bar locations also require that the dress code be followed. Of course, if you prefer to spend tonight in more relaxed attire, a selection of casual dining and entertainment venues (Artisans' Foodhall, The Pavilion, Golden Lion and Bright Lights Society) are available for your enjoyment.

Please note non-ripped, jeans are appropriate, but please refrain from wearing shorts, sports attire, swim wear or sleeveless t-shirts outside of the gym, spa and deck spaces.

For your information

Port Information/Passport requirements/Port agent

Local authorities recommend guests not to carry their passports ashore today, your Queen Anne guest identification card is sufficient. It is however, recommended that you carry some form of government issued photographic identification.

Ship's Agent: M H Bland & Co. Ltd. - Port Warehouse / 1st Floor v, North Mole Road, Gibraltar Port, Gibraltar, GX111AA, Gibraltar

Berth: Number 3

Telephone: +350 2001 2777 for emergencies while ashore
Queen Anne Satellite Phone Number: 00 44 2380 65 5637

Currency: Legal tender in Gibraltar, UK is the Pound sterling (GBP). Foreign exchange is available from the Purser's Office on Deck 1, Grand Lobby. Queen Anne deals in US Dollars.

Postage: Postcards and letters can be posted via the Purser's Office. The postage cost in Gibraltar is US\$3.00 per postcard/letter. If you already have a stamp on your letter or postcard we can still post it for you at the Purser's Office. This facility will close at 2.00pm and any post received after this time will only be posted in the following port.

Prohibited items on balconies

For safety reasons and to protect and preserve the marine environment, no towels or any other personal belongings are to be left on the balcony when the stateroom occupants are not present.

Sun loungers and deck chairs

Sun loungers and deck chair operate on a first-come, first served basis and cannot be reserved. For the consideration of all guests, please ensure you take your belongings when leaving a deck chair for a period of time, or they will be removed and taken to the Purser's Office for collection.

Alcohol Policy

Guests who are under 18 years of age are not permitted to purchase or consume alcohol on board. However, while in U.S. waters, Cunard enforces and abides by the U.S. legal drinking age of 21 years.

Exclusive Cunard and The King's Trust 2025 Calendar

Take a piece of Cunard history home with you to enjoy throughout the year and help to shape young lives for the better through The King's Trust. Featuring 12 iconic images from our archives, these exclusive calendars are just US\$20, and all proceeds will be donated to The King's Trust.

Available at the Cunard Collection Boutique, Deck 3, Midship.

There will be sample copy in every counter for you to appreciate.
Supplies are limited and calendars will only be available until 31 January 2025.



My Voyage



Explore My Voyage, our on board digital planner, and make on board dining reservations, join a virtual queue, view and book Shore Experiences and access your on board account at any time of the day or night. Explore My Voyage by simply connecting to 'Cunard_Guest_WIFI' and visiting myvoyage.cunard.com or by opening your device's camera, hovering over the QR code and selecting the pop-up screen. Reservations for dining are recommended, especially at popular dining times. Alternatively, simply show up at the restaurant of your choice when you are ready to eat. We'll seat you right away if there's availability or ask you to join a virtual queue to let you know when your table is ready. You can also make reservations by calling our dedicated reservations line on 38000.

Opening Times

Main Dining

Restaurants	In the Morning	In the Afternoon	In the Evening
Queens Grill Deck 10, Midship	8.00am - 9.30am	12.00pm - 1.30pm	6.30pm - 9.00pm
Princess Grill Deck 10, Midship	8.00am - 9.30am	12.00pm - 1.30pm	6.30pm - 9.00pm
Britannia Club Deck 2, Midship	8.00am - 9.30am	12.00pm - 1.30pm	6.30pm - 9.00pm
Britannia Deck 2, Aft	8.00am - 9.30am	12.00pm - 1.30pm	First Sitting: 5.30pm with last call by 5.45pm Second Sitting: 8.15pm with last call by 8.30pm
Britannia [^] Deck 3, Aft (Guests on open dining only)	-	-	Open seating from 5.30pm to 9.00pm

All Day Dining

Options	In the Morning	In the Afternoon	In the Evening
	Continental:	Lunch:	Dinner:
Artisans' Foodhall - Buffet Deck 9, Midship	6.00am - 7.00am	11.30am - 2.30pm	6.00pm - 9.30pm
	Buffet:	Afternoon Tea:	Late Snack:
	7.00am - 10.30am	3.00pm - 4.30pm	11.00pm - 12.30am
Carinthia Lounge Deck 3, Midship	7.00am - 10.30am	Brunch: 11.00am - 2.30pm Afternoon Tea [§] : 3.00pm - 4.00pm	
		[§] All hot and cold drinks from the bar are chargeable	
Golden Lion Deck 2, Forward	-	12.00pm - 2.30pm	6.00pm - 8.30pm
Pavilion Wellness Café, Deck 10	8.00am - 10.30am	12.00pm - 3.30pm	-
Pavilion Grill Deck 9, Midship	-	12.00pm - 4.00pm	-
Pavilion Gelateria [§] Deck 9, Midship (*price per scoop)	-	12.00pm - 6.00pm	-
Sir Samuel's [§] Deck 10, Aft	-	-	6.00pm - 9.00pm [§] Cover charge US\$65pp
Room Service 24hrs Available from the comfort of your stateroom	Breakfast Menu: 7.00am - 10.00am Brunch Menu: 10.00am - 12.00pm	Day Menu: 12.00pm - 11.00pm Afternoon Tea: 3.00pm - 4.30pm	Late Night Menu: 11.00pm - 7.00am

Afternoon Tea - 3.00pm - 4.00pm

Queens Room Afternoon Tea - Deck 2, Midship

Alternative Dining - 6.00pm - 9.00pm *Cover charge applies

Aranya [§] Deck 9, Aft	Aji Wa [§] Deck 10, Aft	Tramonto [§] Deck 9, Aft
---------------------------------	----------------------------------	-----------------------------------

*Dinner at Aranya cover charge US\$35pp | *Dinner at Tramonto cover charge US\$20pp

*Dinner at Aji Wa cover charge - Omakase US\$65pp (À la carte & Sushi Bar are individually priced)

Bar and Lounge times

Bright Lights Society	7.15pm - late	Golden Lion	10.00am - late	Pavilion Bar [^]	10.00am - 10.00pm
Cabana [^]	12.00pm - 6.30pm	Grill Lounge	10.30am - 2.00pm	Queens Room	6.00pm - midnight
Carinthia Lounge	7.00am - 10.00pm	(Grill guests only)	5.30pm - 11.30pm	Room 1840	6.00pm - late
Chart Room	4.00pm - late	Grill Terrace	12.00pm - 6.30pm	Sir Samuels Bar	6.00pm - 9.00pm
Churchills Cigar Lounge	4.00pm - late	Lobby Bar	Closed	Sky Bar [^]	12.00pm - 8.00pm
Commodore Club	4.00pm - late	Panorama Pool Club [^]	10.00am - 10.00pm	Wellness Bar	8.00am - 3.30pm

[^]weather permitting

Facilities and Retail times

Grand Lobby Boutiques		Mareel Spa & Salon	8.00am - 10.00pm
Queens Room Boutiques	8.00pm - 10.00pm	Fitness Centre	7.00am - 7.00pm
Experience Lounge		Thermal Suite	8.00am - 8.00pm
Cabinet of Curiosities		Medical Centre (dial 911 or 999 for medical emergencies and 8880 for clinic appointments) [™]	8.00am - 10.00am 4.00pm - 6.00pm
Florist	Order any time at the Purser's Office	On board Reservations (ext. 38000) [^]	8.00am - 6.00pm
The Gallery	6.00pm - 9.00pm	Play Zone (2 - 7 years old)	2.00pm - 5.00pm
Photography Centre	5.00pm - 10.00pm	Kids/Teen Zone (8-17 years old)	6.00pm - 11.00pm [*]
Screens available 24 hrs		Purser's Office	Open 24 hours
Library	8.00am - 11.00am 3.00pm - 6.00pm	Shore Experience Office	7.00am - 9.00am 5.00pm - 7.00pm
Room 1840 Casino Cashier	8.00pm - late	Voyage Sales	8.00am - 11.00am
Room 1840 Casino Tables	8.00pm - late	To make an appointment, call 33000	4.00pm - 7.00pm
Sports Activities	9.00am - 6.00pm		
Pools & Jacuzzis	7.00am - 10.00pm		

All times are subject to change. [^]Shore Experience Office to offer assistance with My Voyage and internet reservations.

[™]Appointments can be booked between 8.00am - 11.00am and 3.00pm - 6.00pm by dialling 8880. For medical emergencies, guests should dial 999 or 911

* Please note check out is 15 minutes prior to the session end time.