



Daily Programme

Tuesday, 17 October 2023

Tonight: Smart Attire

Queen Victoria Voyage V327

Weather: High 22°C (72°F) Low 20°C (68°F)

Sunrise 7.47am Sunset 6.55pm

Showers with sunny spells later

Time Zone: GMT+1

In the port of Lisbon, Portugal



Arrival time: 8.00am | All aboard time: 5.30pm

Port Highlights



Lisbon is Portugal's hilly, coastal capital city. From imposing São Jorge Castle, the view encompasses the old city's pastel-coloured buildings, Tagus Estuary and Ponte 25 de Abril suspension bridge. Nearby, the National Azulejo Museum displays 5 centuries of decorative ceramic tiles. Just outside Lisbon is a string of Atlantic beaches, from Cascais to Estoril.

Lisbon is one of the oldest cities in western Europe. After the region was settled by the Celts, it was then founded by the Phoenicians. They established a settlement called Ulissipo, which was then conquered by the Greeks and Carthaginians. In 205 BC, the Romans won the Second Punic War against the Carthaginians and occupied the city, calling it Olissipo. Ancient Lisbon was integrated into the Roman province of Lusitania, but when the Roman Empire collapsed, it was invaded by Germanic tribes and was controlled by the Kingdom of the Suebi until 585.

For your information

Port information/Passport requirements/Port agent

Document required to proceed ashore: Queen Victoria voyage identification card is required to proceed ashore and to scan off the ship.

Ship's Agent: James Rawes Navegação, Lda.

Address: Av. 24 de Julho, 126 1º Esq, 1350-346 Lisboa, PORTUGAL

Telephone: + (00) 351 213 241 851 for emergencies while ashore.

Queen Victoria Satellite Phone Numbers: + (00) 870 7732 585 70 or + (00) 870 7732 594 40.

Berth: Lisbon Cruise Terminal.

Currency: The legal tender in Lisbon is the Euro (€) which is available on board. Currency exchange of US dollars (USD) and GB pounds (£) is available from the Purser's Office on Deck 1 in the Grand Lobby. Please be advised we can only accept the denominations that we sell.

Postage: Postcards and letters weighing less than 50g in weight can be posted via the Purser's Desk on Deck 1 in the Grand Lobby. There is a charge of \$3.00 for this service. All postage must be in by 3.00pm.

Ship's Security Notice: In order to prevent unauthorised persons from boarding the ship, you are required to carry your voyage identification card with you when going ashore. You will be asked to produce this at the gangway when you leave and return to the ship. Be aware that we have established a secure area around the vessel, and our security procedures require that you must be prepared to show your voyage identification card when entering this area, in addition to showing it to the Security Staff at the gangway when leaving or boarding the ship. We kindly ask you not to accept or bring on board any parcels or packages from strangers. Before boarding the ship, you may also be asked by our Security Staff to open parcels or handbags that you are carrying. We are sure that you will appreciate that this security is in the best interest of all concerned.

What to Wear: Smart Attire

From 6.00pm on board, we ask that you wear smart attire. This means smart collared shirts, evening tops, trousers, skirts and dresses. Jackets are optional.

Of course, if you prefer to spend tonight in more relaxed attire, a selection of casual dining and entertainment venues are available for your enjoyment. Feel free to dress casually as you visit any of the following venues: the Lido Restaurant, Golden Lion, Casino, Winter Garden and Yacht Club. Please note that non-ripped jeans are appropriate, but please refrain from wearing shorts, sports attire, swim wear or sleeveless t-shirts outside of the gym, spa and deck spaces.

Alcohol policy

Guests who are under 18 years of age are not permitted to purchase or consume alcohol on board. Government issued identification may be requested.

Hand antibacterial units in the Lido

We encourage all of our guests to assist us in retaining a healthy ship by washing hands before eating and drinking and using the hand antibacterial before proceeding into the buffet area. Dispensers are located at the entrances.

Noise in guest areas

We kindly ask all guests to be respectful with regards to keeping noise to a minimum. Please try not to slam stateroom doors either into corridors or onto balconies, as guests around you may be resting. We are sure you will understand this small courtesy helps all to enjoy a relaxing voyage.

Tax refund ashore

The Customs Officials will be available to process tax refunds from 2.00pm inside the terminal building in the Customs Office, on the ground floor near the terminal exit. If you have purchased goods in Lisbon and require a tax refund, you must have been issued a specific invoice from the shop you have purchased your goods from in order to be able to claim the tax back; normal invoices are not valid. Please take your Tax Refund Form, your identification, and the actual purchase with you to present to the customs representative.

Pickpockets in Lisbon

Please be aware that there are pickpockets in operation in Lisbon, especially on public transport, at the markets and bus stops near and around the Cruise Terminal. For any emergencies ashore, please see the contact details below.

Lisbon Tourist Police Stations Details (Assistance in English and other languages):

- PSP Turismo - Palácio da Foz: Praça dos Restauradores, Lisboa.
Telephone: + (00) 351 213 400 090.
- PSP Turismo - Santa Apolónia: Largo Museu da Artilharia Nr. 1, Lisboa.
Telephone: + (00) 351 218 804 030.
Email Address for both: lsbetur@psp.pt.

Whilst we do not wish to restrict your movements ashore today, we do suggest taking the following precautions:

- Do not wear any jewellery that is likely to attract attention.
- Do not carry your wallet in your back pocket.
- Keep your handbags zipped at all times.
- Secure all your personal possessions.
- We advise you to be careful if you are taking any high value items, including cameras ashore.
- Maintain an awareness of your surroundings at all times.
- We advise you not to take your passports ashore, unless it is absolutely necessary and you must remain vigilant.

Opening Times

Main Dining

Restaurants	In the Morning	In the Afternoon	In the Evening
Queens Grill Deck 11, B stairway	8.00am - 9.30am	12.00pm - 1.30pm	6.30pm - 9.00pm
Princess Grill Deck 11, B stairway	8.00am - 9.30am	12.00pm - 1.30pm	6.30pm - 9.00pm
Britannia Club Deck 2, B stairway	8.00am - 9.30am	12.00pm - 1.30pm	6.30pm - 9.00pm
Britannia Deck 2, C stairway	8.00am - 9.30am	12.00pm - 1.30pm	Open Sitting: 5.45pm - 9.00pm
Britannia Deck 3, C stairway			First Sitting: 5.45pm with last call 6.15pm Second Sitting: 8.15pm with last call 8.45pm

Alternative Dining

Options	In the Afternoon	In the Evening
Steakhouse at The Verandah ^{US\$} Deck 2, B stairway	-	6.00pm - 9.00pm
Dinner at the Lido - Riviera ^{US\$} Deck 9, B stairway, Starboard		6.30pm - 9.00pm

^{US\$}Steakhouse at The Verandah cover charge Lunch US\$30pp Dinner US\$50pp
| Dinner at the Lido - Riviera cover charge US\$25pp

All Day Dining

Options	In the Morning	In the Afternoon	In the Evening
Lido Restaurant - Buffet Deck 9, B stairway	Continental: 6.00am - 7.00am Buffet: 7.00am - 10.30am	Lunch: 11.30am - 2.30pm	Dinner: 6.00pm - 9.00pm Late Snack: 10.00pm - 12.00am
Lido Grill [^] Deck 9, C stairway		12.00pm - 5.00pm	
Lido Pizzeria Deck 9, B stairway		12.00pm - 3.00pm	6.00pm - 9.00pm
Golden Lion Pub Deck 2, A stairway		12.00pm - 2.30pm	6.30pm - 8.30pm

[^] weather permitting

Afternoon Tea - 3.00pm - 4.00pm

Grill's Guests Only - Princess Grill - Deck 11, B stairway	Queens Room - Deck 2, B stairway Lido - Deck 9, B stairway (until 4.30pm)
--	--

Bar and Lounge times

Chart Room	7.00am - 12.00am	Midships Lounge - Gin & Fizz	5.00pm - 11.30pm
Commodore Club	3.00pm - 12.00am	Winter Garden	9.00am - 11.00pm
Golden Lion Pub	10.00am - late	Yacht Club	9.30pm - late
Lido Bar [^]	10.00am - 9.00pm		

[^] weather permitting

Guests under the legal drinking age of 18 years old will not be served alcoholic beverages nor are they to consume alcoholic beverages. Please understand that you may be requested to show your identification indicating your date of birth. Guests under the age of 18 years are also not permitted in the Yacht Club after 11.00pm.

Facilities and Retail times

Bookshop	After sailing - 10.00pm	Play Zone (2-7 year olds)	2.00pm - 5.00pm 6.00pm - 11.00pm
Clarendon Fine Art	Closed for private event	Kids/Teen Zone (8-17 year olds)	2.00pm - 5.00pm 6.00pm - 11.00pm
Casino Cashier	6.30pm - late	Night Nursery (6 months-23 months)	6.00pm - 11.00pm
Casino Tables	6.30pm - late	Voyage Sales (Appointment only)	please dial 33000
Casino Slot Machines	6.30pm - late	Photo Gallery	5.00pm - 10.00pm
Florist	Order any time at the Purser's Office	Casual Portrait's Grand Lobby, Deck 2, Midships	6.00pm - 9.00pm
Library & Internet Assistance	8.00am - 12.00pm 3.00pm - 7.00pm	Lido Pool [^]	7.00am - 9.00pm
Mareel Fitness Centre	6.00am - 8.00pm	Lido Jacuzzi [^] (Starboard Side) [^]	7.00am - 9.00pm
Mareel Spa & Salon	8.00am - 8.00pm	Lido Jacuzzi [^] (Port Side) [^]	7.00am - 9.00pm
Royal Arcade Boutiques	After sailing - 10.00pm	Pavilion Pool [^]	7.00am - 9.00pm
Medical Centre (dial 911 or 999 for medical emergencies) ^{^^}	By appointment only, please dial 8880	Pavilion Jacuzzi [^] (Starboard Side) [^]	7.00am - 9.00pm
Purser's Office	Open 24 hours	Pavilion Jacuzzi [^] (Port Side) [^]	7.00am - 9.00pm
Shore Experiences Office	8.00am - 9.00am 5.00pm - 7.00pm	Sports Decks (9,10 & 11)	8.00am - 8.00pm

[^] weather permitting

All times are subject to change.

[^]Please be advised that the hot tubs and swimming pools are not supervised.

^{^^}Charges apply. Appointments can be booked between 8.00am - 11.00am & 3.00pm - 6.00pm by dialling 8880.

For medical emergencies, guests should dial 999 or 911.

Shore Experiences

For guests booked on shore experiences, have your shore experience tickets ready to show the Shore Experiences Staff at check in.

If you are travelling with friends, please meet beforehand and disembark at the same time so that you are allocated the same group.

The shore experiences will meet on the Pier Ashore.

8.20am	204A	Charming Óbidos
8.20am	209A	Picture Lisbon
8.35am	193A	Lisbon Highlights & Coast of Estoril
9.05am	226A	Sintra and Amazing Quinta da Regaleira
9.20am	189B	A Taste of Lisbon - Small Group Tour
9.20am	205A	Leisurely Lisbon
9.50am	005A	Lisbon by Land & River
10.20am	200A	Lisbon Sights & Amphibious Duck
12.20pm	196A	See Lisbon by Tuk Tuk
12.50pm	012A	Lisbon by Tram & Coach
1.20pm	200B	Lisbon Sights & Amphibious Duck
1.50pm	012B	Lisbon by Tram & Coach

We kindly ask you not to attend any earlier than the advertised time as the transportation won't be ready and there will be no available seating.

All shore experience transportation will have your shore experience stated in the front window. Please check before boarding your transportation or if unsure please ask a member of the Shore Experiences Team. Please note it may be necessary to walk some distance to reach your mode of transport for your designated shore experience.

Wheelchair assistance

Guests are kindly reminded that wheelchair assistance, if required, will be provided to assist guests on and off the gangway only. As per the terms and conditions stated in the Cunard brochure, guests must be able to make their own way to the transportation on the pier or be accompanied by a travel companion who is able to assist them.

Complimentary shuttle bus service

There will be a complimentary shuttle bus service that will run between the Queen Victoria terminal building and the Restauradores Square. The first bus will depart at 8.15am. The shuttle bus transfer will take approximately 40 minutes each way and is subject to local traffic conditions on the day. The last shuttle bus from the Praça dos Restauradores to the Queen Victoria terminal building will be at 4.45pm.

There will be a wheelchair accessible vehicle in rotation throughout the day.

Please understand that there may be queues at peak periods of travel and seating is on a first-come, first-served basis. We will not be able to accommodate everybody on the last bus, so we ask that you plan your day accordingly.

Tonight's Featured Entertainment

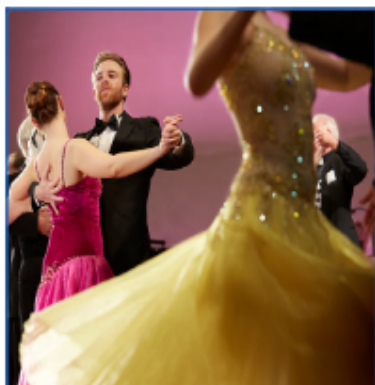
Piano Entertainer Lisa Harman

With a career spanning over four decades in entertainment from being a child prodigy, Lisa has the musical versatility to take you on a journey from Judy Garland, Shirley Bassey, Billy Joel, and Tina Turner to a heartfelt tribute to the spectacular classic Julie Andrews.

Her virtuosic piano skills will take you from Frederic Chopin to the infamous Les Dawson.

Presented by Assistant Entertainment
Director Tommi Baxter-Hil

8.00pm & 10.00pm,
Royal Court Theatre, Decks 1, 2 & 3, Forward



A Night in the Ballroom

Enjoy an evening dancing to a collection of ballroom and Latin dance tunes from classic to modern day with the Queens Room Musicians.

Featuring vocalists, Jeremy Wong and Viktoriia Rubizova, under the musical direction of Daniel Smith.

8.45pm, 9.45pm & 10.45pm,
Queens Room, Deck 2, Midships

Live Entertainment

Cunard Insights

Learn Something New

Social Gatherings

Let's Play

Something Special

Morning/Afternoon/Early Evening 6.00am - 6.15pm

Live Music On Deck with The Watson Duo

At 5.45pm, Lido Pool, Deck 9, Aft - Weather permitting

- 6.00am Good Morning Queen Victoria – Stateroom TV, Channel 22
- 8.00am Sports Decks Open – Games Decks 9,10 & 11
- 9.00am Christian Fellowship Gathering (unhosted) – Commodore Club, Deck 10, Forward
- 9.30am Solo Travellers' Meeting Point – Golden Lion Pub, Deck 2, Forward
- 10.00am Social Bridge & Whist Play – Card Room, Deck 3, Midships
- 10.00am Morning Team Trivia – Golden Lion Pub, Deck 2, Forward 🎲
- 11.15am Baggo Competition² - Deck 10, Midships 🎲
- 12.00pm Movie: Wrong Place – Duration: 96 minutes – Stateroom TV, Channel 22
- 2.00pm Shuffleboard Competition² – Deck 11, Forward 🎲
- 2.00pm Movie: Asteroid City - Royal Court Theatre, Decks 1, 2 & 3 Forward
- 3.00pm Golf Darts Competition² – Golden Lion Pub, Deck 2, Forward 🎲
- 3.00pm Afternoon Tea with Pianist Samuel Gustenelli – Queens Room, Deck 2, Midships
- 4.15pm Afternoon Team Trivia – Golden Lion Pub, Deck 2, Forward 🎲
- 4.45pm LGBTQ+ Social Hour – Commodore Club, Deck 10, Forward
- 5.00pm Line Dancing Sailaway - Lido Pool, Deck 9, Aft (Weather permitting)
- 5.00pm Imprezza String Trio – Grand Lobby, Deck 2, Midships
- 5.00pm Friends Of Bill W. – Admiral's Lounge, Deck 10, Forward
- 5.15pm Cocktail Hour with Piano Entertainer Robin Rose – Commodore Club, Deck 10
- 5.30pm Solo Travellers' Get Together (unhosted) – Midships Lounge, Deck 3, Midships
- 5.45pm Live Music On Deck with The Watson Duo – Lido Pool, Deck 9, Aft (Weather permitting)
- 6.00pm Cocktail Pianist George Gazsi – Grand Lobby, Deck 1, Midships
- 6.15pm Piano Entertainer Robin Rose – Commodore Club, Deck 10, Forward
- 6.30pm DJ Evans Spins The Hits - Lido Pool, Deck 9, Aft (Weather permitting)

² Activity competitions are for our guests aged 18 years or older.

Today's Movie: Asteroid City

In an American desert town in the mid-fifties, the Junior Stargazer Convention attracts stargazers of different ages. A group of students and their parents visit the town to attend the event. What follows is an unexpected exchange of ideas and experiences that lead to eye-opening revelations.

Rated: PG-13. Duration: 105 minutes.

2.30pm, Royal Court Theatre, Decks 1, 2 & 3, Forward



Line Dance Sailaway Party

Join Show Company Dancers Holly and Kelvin, as you dance your way through some of your favourite routines of the voyage so far.

Followed by live music from the Watson Duo at 5.45pm.

5.00pm, Lido Pool, Deck 9, Aft - Weather Permitting

MAREEL

WELLNESS & BEAUTY

- 7.00am Sunrise Stretch – Mareel Wellness & Beauty, Deck 9, Forward
- 8.00am HIIT Reboot (US\$) – Mareel Wellness & Beauty, Deck 9, Forward
- 9.00am Salon Pamper Package – Mareel Wellness & Beauty, Deck 9, Forward
- 1.00pm Swollen Feet and Ankles Seminar – Mareel Wellness & Beauty, Deck 9, Forward
- 2.00pm Walk In Comfort With Good Feet – Mareel Wellness & Beauty, Deck 9, Forward
- 3.00pm Advanced Facial Rejuvenation with Dr. Jorge, M.D. - Mareel Wellness & Beauty, Deck 9
- 4.0pm Complimentary Herbal Consultations with Dr. Sanju - Mareel Wellness & Beauty, Deck 9
- 5.00pm Slow Flow Yoga (US\$) – Mareel Wellness & Beauty, Deck 9, Forward
- 6.00pm Stretch & Release – Mareel Wellness & Beauty, Deck 9, Forward

Tonight's dress code: Smart Attire
Alternative dining option: Riviera

Evening 7.00pm - Late

Showtime: Lisa Harman

At 8.00pm & 10.00pm, Royal Court Theatre, Decks 1, 2 & 3, Forward

- 7.00pm Wipeout Trivia - Golden Lion Pub, Deck 2, Forward
- 7.00pm Imprezza String Trio – Grand Lobby, Deck 2, Midships
- 7.15pm Amethyst Duo – Queens Room, Deck 2, Midships
- 7.15pm The Sounds of Ireland with Newfoundland Folk Duo – Winter Garden, Deck 9, Midships
- 7.15pm Cocktail Pianist George Gazsi – Commodore Club, Deck 10, Forward
- 7.30pm Casino Slot Tournament - Casino, Deck 2, Forward (until 9.45pm)
- 7.45pm UEFA European Qualifier: England vs Italy – Golden Lion Pub, Deck 2, Forward
- 8.00pm Showtime: Lisa Harman – Royal Court Theatre, Decks 1, 2 & 3, Forward
- 8.00pm Recorded Ballroom & Latin Dance Music – Queens Room, Deck 2, Midships
- 8.15pm The Sounds of Ireland with Newfoundland Folk Duo – Winter Garden, Deck 9, Midships
- 8.45pm Timeless Tunes with the Watson Duo – Commodore Club, Deck 10, Forward
- 8.45pm Cocktail Pianist George Gazsi – Grand Lobby, Deck 3, Midships
- 8.45pm A Night in the Ballroom with the Queens Room Musicians – Queens Room, Deck 2, Midships
- 9.00pm Full House Party – Winter Garden, Deck 9, Midships
- 9.30pm Chilled Beats with DJ Evans – Yacht Club, Deck 10, Forward
- 9.45pm Imprezza String Trio – Grand Lobby, Deck 2, Midships
- 9.45pm Rocking Riffs with Amethyst Duo - Golden Lion Pub, Deck 2, Forward
- 9.45pm A Night in the Ballroom with the Queens Room Musicians – Queens Room, Deck 2, Midships
- 9.45pm Easy Listening with the Watson Duo – Commodore Club, Deck 10, Forward
- 10.00pm Showtime: Lisa Harman – Royal Court Theatre, Decks 1, 2 & 3, Forward
- 10.00pm The Sounds of Ireland with Newfoundland Folk Duo – Winter Garden, Deck 9, Midships
- 10.30pm Number One Hits with DJ Evans – Yacht Club, Deck 10, Forward
- 10.45pm Piano Entertainer Robin Rose – Commodore Club, Deck 10, Forward
- 10.45pm A Night in the Ballroom with the Queens Room Musicians – Queens Room, Deck 2, Midships
- 10.45pm Late Night Live with Amethyst Duo - Golden Lion Pub, Deck 2, Forward
- 11.30pm The Beat Goes On with DJ Evans – Yacht Club, Deck 10, Forward

For guests who are hard of hearing, assistive listening devices (headsets and neckloops) are available at the Purser's Office located on Deck 1 in the Grand Lobby. These devices can be utilised in the Royal Court Theatre and Queens Room.

Full House Party

Join the Entertainment Team for this free to play, extraordinary musical bingo experience that will have you dancing in your seats and singing along to your favourite tunes.

9.00pm, Winter Garden, Deck 9, Midships



The Sound of Ireland with Newfoundland Folk Duo

Join father and son duo, Evan and Baylea as they perform a variety of traditional and contemporary folk music to keep your feet tapping and your hands clapping.

7.15pm, 8.15pm & 10.00pm,
Winter Garden, Deck 9, Midships

SHOPPING

The retail seminar schedule and events that will be taking place throughout the day.

- 6.00pm Discover Frederique Constant Smart Watch Collection - Fine Watch Boutique, Deck 3
- 6.15pm Price Match Guaranteed - 2 for deals - Liquor Boutique, Deck 3, Midships
- 6.20pm Discover GHD - a brand from UK - Beauty Boutique, Deck 3, Midships
- 6.30pm Costume Jewellery - Marketplace, Royal Arcade, Deck 3, Midships