



Daily Programme

Saturday, 14 October 2023

Tonight: Smart Attire

Queen Victoria Voyage V327

Weather: High 29°C (84°F) Low 20°C (68°F)

Sunrise 7.31am Sunset 6.46pm

Sunshine with a light breeze

Time Zone: GMT+2

In the port of Cagliari, Italy

Arrival time: 8.00am | All aboard time: 5.30pm

Port Highlights



At 6.45am, Queen Victoria picked up her local pilot outside the breakwaters of Cagliari. Once through the breakwaters, she swung through 180° and proceeded astern towards the berth before being secured alongside. At 6.00pm, we plan to let go of our lines and proceed on reciprocal courses to arrival, and soon after exiting the breakwaters, dropping off our local pilot, and setting west south westerly courses towards the Gibraltar Straits.

Cagliari is an ancient city that has been subjected to the rule of many civilisations throughout its history. First inhabited during Neolithic times, Cagliari is now Sardinia's largest city and the island's capital. Blessed with a sheltered harbour, salty lagoons, a hearty wheat supply, and ore from local mines, the city has always been rich with natural resources. Cagliari is a cultural centre for the island and is studded with unique monuments and the fascinating artistic legacies of its occupying nations. Explore the city's botanical gardens that are bursting with exotic life, gaze in awe at the breathtaking amphitheatre carved into the rocky landscape, and indulge yourself with some hearty, fresh Sardinian cuisine.

For your information

Port information/Passport requirements/Port agent

Passport Information: No passports are required when proceeding ashore, your Queen Victoria voyage identification card is sufficient.

Ship's Agent: Plaisant shipping@.

Address: Via Roma 121, 09124, Cagliari, Italy.

Telephone: (00) + 39 0706 68208 for emergencies while ashore.

Queen Victoria Satellite Phone Numbers: + (00) 870 7732 585 70 or + (00) 870 7732 594 40.

Berth: Molo Rinascita

Currency: The legal tender in Cagliari, is the Euro (€) which is available on board. Currency exchange of US dollars (USD) and GB pounds (£) is available from the Purser's Office on Deck 1 in the Grand Lobby. Please be advised we can only accept the denominations that we sell.

Postage: Postcards and letters weighing less than 50g in weight can be posted via the Purser's Desk on Deck 1 in the Grand Lobby. There is a charge of US\$4.00 for this service. All postage must be in by 3.00pm.

Ship's Security Notice: In order to prevent unauthorised persons from boarding the ship, you are required to carry your voyage identification card with you when going ashore. You will be asked to produce this at the gangway when you leave and return to the ship. Be aware that we have established a secure area around the vessel, and our security procedures require that you must be prepared to show your voyage identification card when entering this area, in addition to showing it to the Security Staff at the gangway when leaving or boarding the ship. We kindly ask you not to accept or bring on board any parcels or packages from strangers. Before boarding the ship, you may also be asked by our Security Staff to open parcels or handbags that you are carrying. We are sure that you will appreciate that this security is in the best interest of all concerned.

Safety and Security Ashore: Whilst we do not wish to restrict your movements ashore we do suggest taking the following precautions:

- Do not stray from the main tourist areas.
- Do not wear any jewellery that is likely to attract attention.
- Be careful to secure personal possessions in pockets, wallets and handbags as pickpockets can operate in all cities.
- We advise you to be careful if you are taking any high value items, including cameras ashore.
- Maintain an awareness of your surroundings at all times.

Shore Experiences

For guests booked on shore experiences, have your shore experience tickets ready to show the Shore Experiences Staff at check in. If you are travelling with friends, please meet beforehand and disembark at the same time so that you are allocated the same group.

The following shore experiences will be meeting in the Pier Ashore.

8.50am	011A	World Heritage Site of Barumini
8.50am	019A	Authentic Homestead Visit & Wine Tasting
8.50am	028A	Devil's Saddle Hike & Drive
9.05am	002A	Ancient Sardinia
9.20am	004A	Panoramic Cagliari & Wine Tasting
9.20am	004C	Panoramic Cagliari & Wine Tasting
9.35am	003A	Traditional Sardinia Experience
9.50am	006A	Sardinian Jeep Adventure
11.20am	004B	Panoramic Cagliari & Wine Tasting

We kindly ask you not to attend any earlier than the advertised time as the transportation won't be ready and there will be no available seating.

All shore experience transportation will have your shore experience stated in the front window. Please check before boarding your transportation or if unsure please ask a member of the Shore Experiences Team.

Complimentary shuttle bus service.

There will be a complimentary shuttle bus service that will run from Queen Victoria to the port gate. The first bus will depart at 8.00am. The shuttle bus transfer will take approximately 5 minutes. The last shuttle bus from the port gate to Queen Victoria will be at 5.00pm. All the shuttle buses are wheelchair accessible.

Due to security regulations by the port authority, pedestrian access is restricted within the port area. This restriction is in place to prevent any accidents or interference with the operations of the port.

Tonight's Featured Entertainment

Vocalist, Comedian Lisa Harman

Multitalented entertainer Lisa Harman pays tribute to some of the greatest vocalists and pianists worldwide, from Adele to Ella Fitzgerald, to the iconic Barbra Streisand and introducing Duchin's 'Dizzy Finger's'.

Presented by Entertainment Director, Michael Harvey.

8.00pm & 10.00pm,
Royal Court Theatre, Decks 1, 2 & 3, Forward



Opening Times

Main Dining

Restaurants	In the Morning	In the Afternoon	In the Evening
Queens Grill Deck 11, B stairway	8.00am - 9.30am	12.00pm - 1.30pm	6.30pm - 9.00pm
Princess Grill Deck 11, B stairway	8.00am - 9.30am	12.00pm - 1.30pm	6.30pm - 9.00pm
Britannia Club Deck 2, B stairway	8.00am - 9.30am	12.00pm - 1.30pm	6.30pm - 9.00pm
Britannia - Freedom Dining Deck 2, C stairway	8.00am - 9.30am	12.00pm - 1.30pm	Open Sitting: 5.45pm - 9.00pm
Britannia - Assigned Dining Deck 3, C stairway			First Sitting: 5.45pm with last call 6.15pm Second Sitting: 8.15pm with last call 8.45pm

Alternative Dining

Options	In the Afternoon	In the Evening
Steakhouse at The Verandah ^{US\$} Deck 2, B stairway		6.00pm - 9.00pm
Dinner at the Lido - Coriander ^{US\$} Deck 9, B stairway, Starboard		6.30pm - 9.00pm

^{US\$}Steakhouse at The Verandah cover charge Dinner US\$50pp | Dinner at the Lido - Coriander cover charge US\$25pp

All Day Dining

Options	In the Morning	In the Afternoon	In the Evening
Lido Restaurant - Buffet Deck 9, B stairway	Continental: 6.00am - 7.00am Buffet: 7.00am - 10.30am	Lunch: 11.30am - 2.30pm	America Dinner: 6.00pm - 9.00pm Late Snack: 10.00pm - 12.00am
Lido Grill ^A Deck 9, C stairway		12.00pm - 5.00pm	
Lido Pizzeria Deck 9, B stairway		12.00pm - 3.00pm	6.00pm - 9.00pm
Golden Lion Pub Deck 2, A stairway		12.00pm - 2.30pm	6.30pm - 8.30pm

^Aweather permitting

Afternoon Tea - 3.00pm - 4.00pm

Grill's Guests Only - Princess Grill - Deck 11, B stairway	Queens Room - Deck 2, B stairway Lido - Deck 9, B stairway (until 4.30pm)
--	--

Bar and Lounge times

Chart Room	7.00am - 12.00am	Midships Lounge - Gin & Fizz	5.00pm - 11.30pm
Commodore Club	3.00pm - late	Winter Garden	9.00am - 11.00pm
Golden Lion Pub	10.00am - late	Yacht Club	9.30pm - late
Lido Bar ^A	10.00am - 9.00pm		

^Aweather permitting

Guests under the legal drinking age of 18 years old will not be served alcoholic beverages nor are they to consume alcoholic beverages. Please understand that you may be requested to show your identification indicating your date of birth. Guests under the age of 18 years are also not permitted in the Yacht Club after 11.00pm.

Facilities and Retail times

Bookshop	After Sailing - 10.00pm	Play Zone (2-7 year olds)	2.00pm - 5.00pm 6.00pm - 11.00pm
Clarendon Fine Art	6.00pm - 10.00pm	Kids/Teen Zone (8-17 year olds)	2.00pm - 5.00pm 6.00pm - 11.00pm
Casino Cashier	6.30pm - late	Night Nursery (6 months-23 months)	6.00pm - 11.00pm
Casino Tables	6.30pm - late	Photo Gallery	5.00pm - 10.00pm
Casino Slot Machines	6.30pm - late	Casual Portraits (Grand Lobby, Deck 2, Midships)	6.00pm - 9.00pm
Florist	Order any time at the Purser's Office	Voyage Sales (Appointment only)	please dial 33000
Library & Internet Assistance	8.00am - 12.00pm 3.00pm - 7.00pm	Lido Pool ^{AA}	7.00am - 9.00pm
Mareel Fitness Centre	6.00am - 8.00pm	Lido Jacuzzi ^A (Starboard Side) ^A	7.00am - 9.00pm
Mareel Spa & Salon	8.00am - 8.00pm	Lido Jacuzzi ^A (Port Side) ^A	7.00am - 9.00pm
Royal Arcade Boutiques	After Sailing - 10.00pm	Pavilion Pool ^{AA}	7.00am - 9.00pm
Medical Centre (dial 911 or 999 for medical emergencies) ^{AA}	By appointment only, please dial 8880	Pavilion Jacuzzi ^A (Starboard Side) ^A	7.00am - 9.00pm
Purser's Office	Open 24 hours	Pavilion Jacuzzi ^A (Port Side) ^A	7.00am - 9.00pm
Shore Experiences Office	8.00am - 9.00am 4.00pm - 6.00pm	Sports Decks (9,10 & 11)	8.00am - 8.00pm

^Aweather permitting

All times are subject to change.

^APlease be advised that the hot tubs and swimming pools are not supervised.

^{AA}Charges apply. Appointments can be booked between 8.00am - 11.00am & 3.00pm - 6.00pm by dialling 8880.

For medical emergencies, guests should dial 999 or 911.

Today's Activities

What to Wear: Smart Attire

From 6.00pm on board, we ask that you wear smart attire. This means smart collared shirts, evening tops, trousers, skirts and dresses. Jackets are optional.

Of course, if you prefer to spend tonight in more relaxed attire, a selection of casual dining and entertainment venues are available for your enjoyment. Feel free to dress casually as you visit any of the following venues: the Lido Restaurant, Golden Lion, Casino, Winter Garden and Yacht Club. Please note non-ripped jeans are appropriate, but please refrain from wearing shorts, sports attire, swim wear or sleeveless t-shirts outside of the gym, spa and deck spaces.

Alcohol policy

Guests who are under 18 years of age are not permitted to purchase or consume alcohol on board. Government issued identification may be requested.

Wheelchair assistance

Guests are kindly reminded that wheelchair assistance, if required, will be provided to assist guests on and off the gangway only. As per the terms and conditions stated in the Cunard brochure, guests must be able to make their own way to the transportation on the pier or be accompanied by a travel companion who is able to assist them.

Environmental

In order to ensure that the world's oceans and our many beautiful and unique voyage destinations remain pristine, Cunard Line prides itself on maintaining the highest standards of compliance with regards to national and international laws for the protection of the environment. In order to help save fuel and fresh water, guests are kindly asked to turn the lights and televisions off when not in their staterooms and not to leave the taps running unnecessarily. This would help us with our Environmental Policy, ISO 14001 and 50001, which requires us to continually improve our environmental management and reduce our carbon footprint.

Fast Track Disembarkation

If you wish to disembark early and leave the ship prior to the main disembarkation in Southampton, you can apply for Fast Track disembarkation by dialling 33000 or visiting the Purser's Office. You must be capable of carrying all your luggage with you. Kindly note that mobility assistance is not available for guests who wish to use our Fast Track disembarkation service. Once arrangements are confirmed, you will receive further instructions in preparation for your disembarkation. Fast Track disembarkation is expected to take place from 7.15am to 7.30am.

Solo Travellers Luncheon

There will be a solo travellers luncheon taking place in the Britannia Restaurant at 12.30pm on 15 October. Please sign up at the Purser's Office by 5.00pm today, 14 October to reserve your space.

Live Sports: Rugby World Cup Quarter Finals

Our Winter Garden is the venue of choice once again as the next group of fixtures get underway.

5.00pm - Wales vs Argentina

9.00pm - Ireland vs New Zealand

Winter Garden, Deck 9, Midships



Sailaway Reels with Newfoundland Folk Duo

Enjoy the music, beautiful scenery and the delicious drink specials as Queen Victoria sails from Cagliari, Italy.

Followed by music from DJ Evans on the decks at 6.15pm.

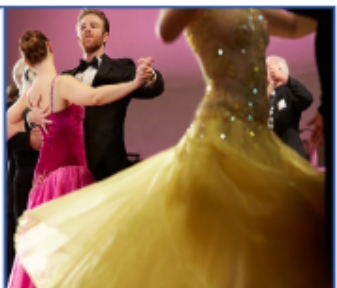
4.30pm & 5.30pm, Lido Pool, Deck 9, Aft
Weather Permitting



Ballroom Blitz with the Queens Room Musicians

Enjoy dancing to ballroom and Latin dance tunes from classic to modern day with members of the Queens Room Musicians, under the musical direction of Sergeii Cherednikov.

8.45pm, 9.45pm & 10.45pm
Queens Room, Deck 2, Midships



Live Entertainment

Cunard Insights

Learn Something New

Social Gatherings

Let's Play

Something Special

Morning/Afternoon/Early Evening 6.00am - 6.15pm

Afternoon Tea with the Imprezza String Trio

At 3.00pm, Queens Room, Deck 2, Midships

- 6.00am Good Morning Queen Victoria – Stateroom TV, Channel 22
- 8.00am Sports Decks Open – Games Decks 9,10 & 11
- 9.00am Christian Fellowship Gathering (unhosted) – Commodore Club, Deck 10, Forward
- 9.30am Solo Travellers' Meeting Point – Golden Lion Pub, Deck 2, Forward
- 10.00am Social Bridge & Whist – Card Room, Deck 3, Midships
- 10.00am Morning Team Trivia – Golden Lion Pub, Deck 2, Forward 🎯
- 11.15am Paddle Tennis Competition² - Deck 11, Forward 🎯
- 12.00pm Movie: A Thousand and One - Duration: 94 minutes – Stateroom TV, Channel 22
- 2.00pm Movie: Guardians Of The Galaxy Vol. 3 – Royal Court Theatre, Decks 1,2 & 3, Forward
- 2.00pm Shuffleboard Competition² – Deck 11, Forward 🎯
- 3.00pm Afternoon Tea with the Imprezza String Trio – Queens Room, Deck 2, Midships
- 3.00pm Golf Darts Competition² – Golden Lion Pub, Deck 2, Forward 🎯
- 4.15pm Afternoon Team Trivia – Golden Lion Pub, Deck 2, Forward 🎯
- 4.30pm Lido Deck Live with Newfoundland Folk Duo – Lido Pool, Deck 9 (Weather Permitting)
- 4.45pm LGBTQ+ Social Hour – Commodore Club, Deck 10, Forward
- 5.00pm Friends Of Bill W. – Admiral's Lounge, Deck 10, Forward
- 5.00pm Rugby World Cup 2023: QF - Wales vs Argentina – Winter Garden, Deck 9, Midships
- 5.00pm Imprezza String Trio – Grand Lobby, Deck 2, Midships
- 5.15pm Cocktail Hour with Guitarist Andrew Scott – Commodore Club, Deck 10, Forward
- 5.30pm Sailaway Reels with Newfoundland Folk Duo – Lido Pool, Deck 9 (Weather Permitting)
- 5.30pm Solo Travellers' Get Together (unhosted) – Midships Lounge, Deck 3, Midships
- 6.00pm Guitarist Andrew Scott – Grand Lobby, Deck 1, Midships
- 6.00pm Recorded Ballroom & Latin Dance Music – Queens Room, Deck 2, Midships
- 6.15pm DJ Evans Spins The Hits - Lido Pool, Deck 9, Aft (Weather Permitting)
- 6.15pm Piano Entertainer Robin Rose – Commodore Club, Deck 10, Forward

² Activity competitions are for our guests aged 18 years or older.

Movie: Guardians Of The Galaxy Vol. 3

Still reeling from the loss of Gamora, Peter Quill rallies his team to defend the universe and one of their own - a mission that could mean the end of the Guardians if not successful.

Rated: PG13. Duration: 150 minutes.

2.00pm, Royal Court Theatre, Decks 1, 2 & 3, Forward



MAREEL

WELLNESS & BEAUTY

- 7.00am Sunrise Stretch – Mareel Wellness & Beauty Fitness Centre, Deck 9, Forward
- 8.00am HIIT Reboot (US\$) – Mareel Wellness & Beauty Fitness Centre, Deck 9, Forward
- 8.00am The Truth About Dermal Fillers – Mareel Wellness & Beauty Fitness Centre, Deck 9
- 9.00am The Healing Benefits of Acupuncture – Mareel Wellness & Beauty Fitness Centre, Deck 9
- 11.00am Secrets To A Flatter Stomach – Mareel Wellness & Beauty Fitness Centre, Deck 9
- 2.00pm Walk In Comfort With Good Feet – Mareel Wellness & Beauty Fitness Centre, Deck 9
- 3.00pm Acupuncture And Chinese Herbs – Mareel Wellness & Beauty Fitness Centre, Deck 9
- 4.00pm Wrinkle Remedies with Dr. Jorge - Mareel Wellness & Beauty Fitness Centre, Deck 9
- 5.00pm Total Tone Pilates (US\$) - Mareel Wellness & Beauty Fitness Centre, Deck 9
- 6.00pm Sunset Stretch – Mareel Wellness & Beauty Fitness Centre, Deck 9, Forward

Tonight's dress code: Smart Attire
Alternative dining option: Coriander

Evening 7.00pm - Late

Showtime: Lisa Harman

8.00pm & 10.00pm, Royal Court Theatre, Decks 1, 2 & 3, Forward

- 7.00pm Guitarist Paul Garthwaite – Golden Lion Pub, Deck 2, Forward
- 7.00pm Imprezza String Trio – Grand Lobby, Deck 2, Midships
- 7.15pm The Watson Duo – Queens Room, Deck 2, Midships
- 7.15pm Piano Entertainer Robin Rose – Commodore Club, Deck 10, Forward
- 7.30pm Wipeout Trivia – Golden Lion Pub, Deck 2, Forward
- 7.30pm Low Limits Table Games - Casino, Deck 2, Forward
- 7.30pm Street Art Preview Exhibition - Clarendon Fine Art Gallery, Deck 3
- 8.00pm Showtime: Lisa Harman – Royal Court Theatre, Decks 1,2 & 3, Forward
- 8.00pm Sequence Dancing – Queens Room, Deck 2, Midships
- 8.00pm Three Card Poker High Hand Competition - Casino, Deck 2, Forward (until 11.00pm)
- 8.15pm The Sounds of Ireland with Newfoundland Folk Duo – Winter Garden, Deck 9, Midships
- 8.15pm Amethyst Duo Celebrate the Eagles and Fleetwood Mac – Golden Lion Pub, Deck 2
- 8.45pm Ballroom Blitz with the Queens Room Musicians – Queens Room, Deck 2, Midships
- 8.45pm Guitarist Andrew Scott – Grand Lobby, Deck 1, Midships
- 8.45pm Mellow Melodies with Watson Duo – Commodore Club, Deck 10, Forward
- 9.00pm Rugby World Cup 2023: QF - Ireland vs New Zealand – Winter Garden, Deck 9, Midships
- 9.00pm The Almost Impossible Trivia – Golden Lion Pub, Deck 2, Forward
- 9.00pm Three Card Poker High Hand Competition -Casino, Deck 2, Forward (until 11.00pm)
- 9.30pm Chilled Beats with DJ Evans – Yacht Club, Deck 10, Forward
- 9.45pm Ballroom Blitz with the Queens Room Musicians – Queens Room, Deck 2, Midships
- 9.45pm Imprezza String Trio – Grand Lobby, Deck 2, Midships
- 9.45pm The Watson Duo – Commodore Club, Deck 10, Forward
- 9.45pm Amethyst Duo – Golden Lion Pub, Deck 2, Forward
- 10.00pm Showtime: Lisa Harman – Royal Court Theatre, Decks 1,2 & 3, Forward
- 10.30pm Disco Divas with DJ Evans – Yacht Club, Deck 10, Forward
- 10.45pm Ballroom and Latin with the Queens Room Musicians – Queens Room, Deck 2, Midships
- 10.45pm Piano Entertainer Robin Rose – Commodore Club, Deck 10, Forward
- 10.45pm Late Night Live with Amethyst Duo – Golden Lion Pub, Deck 2
- 11.30pm The Beat Goes On with DJ Evans – Yacht Club, Deck 10, Forward

For guests who are hard of hearing, assistive listening devices (headsets and neckloops) are available at the Purser's Office located on Deck 1 in the Grand Lobby. These devices can be utilised in the Royal Court Theatre and Queens Room.

The Almost Impossible Trivia

With Assistant Entertainment Director Tommi. Tests your knowledge on a wide range of topics, with questions that cover everything from history to pop culture, this trivia game will keep you on your toes and constantly guessing.

9.00pm, Golden Lion Pub, Deck 2, Forward



SHOPPING

This section of your Daily Programme will be where you can find the daily retail seminar schedule and events that will be taking place.

- 6.00pm Join us for the Special sale on selected Swiss Time Pieces- Fine Watch Boutique, Deck 3
- 6.00pm Discover Paradis Women's Clothing– Fashion Boutique, Deck 3, Midships
- 6.15pm Find your Perfect Fragrance - Beauty Boutique, Deck 3
- 6.30pm Discover Exclusive Blue Diamond Collection Onboard - Fine Jewellery Boutique, Deck 3
- 6.45pm Market Place- Royal Arcade, Deck 3, Midships