



Daily Programme.

Welcome aboard Queen Elizabeth.

Captain Stephen Howarth.



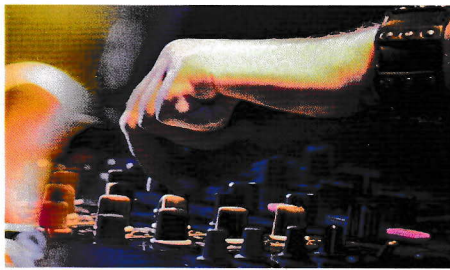
The Captain, his officers and crew extend a very warm welcome to all our guests embarking today.

We will do our utmost to ensure that you have an excellent voyage with us.



Poolside Hits with DJ Felipe.

Start your voyage in style with DJ Felipe as he spins your favourite hits.



At 3.00pm, Lido Pool, Deck 9, Aft

Welcome Aboard Quiz.

Give it your best guess and meet the Entertainment Team in this exciting and challenging quiz.



**At 9.15pm,
Golden Lion Pub, Deck 2, Forward**

Before we sail.

Please complete the following as soon as possible after boarding:

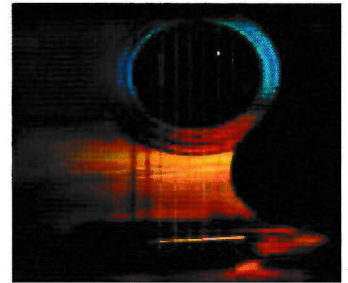
- Watch the in-stateroom safety video in full on channel 57.
- Locate where your life jackets are stowed.
- Review the emergency notice on the back of your stateroom door.
- Familiarise yourself with our well-being and safety protocol guide.
- Attend your designated Assembly Station and scan your Voyage card.
- Review your evening dining arrangements, which have been confirmed in your stateroom.

Welcome aboard celebration.

Join the Staple Hill Duo and the Entertainment Team for a lively and fun celebration as Queen Elizabeth prepares to set sail from Southampton.

Live music, delicious drink specials, and an unforgettable view is the perfect way to start your voyage. Weather permitting.

From 4.45pm, Lido Pool, Deck 9, Aft



Tonight's highlight entertainment: Be Our Guest.

Join the Royal Court Theatre Company as they welcome you aboard Queen Elizabeth.

Start your voyage in the Royal Court Theatre where a warm welcome awaits. Introducing Sally Sagoe, your Entertainment Director. You are cordially invited to "Be Our Guest!"

**At 8.00pm & 10.00pm,
Royal Court Theatre, Decks 1, 2 & 3, Forward**

Please be aware the Theatre doors will open 30 minutes prior to the performance.

To ensure the well-being of all guests and crew, face coverings are required to be worn throughout the entire performance. Food and beverages are not permitted.

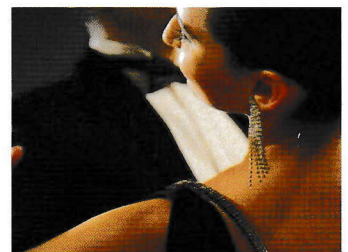


Ballroom & Latin Dance Music.

Dance to the Queens Room Orchestra in the majestic setting of our ballroom.

Featuring vocalists Jack Kenney and Esther Sabine, under the musical direction of Brad Berendes.

**From 8.45pm until late,
Queens Room, Deck 2, Midships**



New Amsterdam Duo.

Enjoy an evening with the New Amsterdam Duo as they perform a variety of songs for your listening pleasure.

**From 9.00pm until 11.45pm,
Garden Lounge, Deck 9, Midships**





Today's activities.

1pm

1.00pm Welcome Aboard Music
With Pianist, George Gazsi and Guitarist, Emil Nikolov.
Grand Lobby, Deck 1, Midships (until 4.00pm)

1.00pm Sports Activities Open
Golf Nets, Shuffleboard, Paddle Tennis, Bowls, Croquet and Table Tennis are available for use. As a courtesy to your fellow guests, we ask that you please sanitise the equipment before and after each use. Our sports venues are located in various areas around Decks 10 and 11.
Games Deck, Decks 10 & 11 (until 8.00pm)

2pm

2.00pm Welcome On Board Portrait
Join us in the Grand Lobby with our ship's telegraph for an embarkation portrait to commemorate the start of your voyage.
Grand Lobby, Deck 3, Midships (until 4.00pm)

3pm

3.00pm Piano Entertainer Clarolyn Maier
From the Hits of Broadway to the Great American Songbook.
Commodore Club, Deck 10, Forward

3.00pm Poolside Hits with DJ Felipe
Start your voyage in style with DJ Felipe as he spins your favourite hits. Weather permitting.
Lido Pool, Deck 9, Aft

4pm

4.30pm Captain's Emergency Procedure Broadcast
All facilities will be closed for the duration of the Captain's broadcast.
Throughout the ship

4.45pm Welcome Aboard Celebration
Join the Staple Hill Duo and the Entertainment Team for a lively and fun celebration as Queen Elizabeth prepares to set sail from Southampton. Weather permitting.
Lido Pool, Deck 9, Aft

4.45pm LGBTQ+ Social Gathering
Commodore Club, Deck 10, Forward

5pm

5.30pm All Aboard
All guests must be on board by this time. Shortly after, the gangway is raised and Queen Elizabeth will depart Southampton and will sail to her next port of call, Lisbon, Portugal. The distance from Southampton, United Kingdom to Lisbon, Portugal is 898 nautical miles.

5.30pm Welcome Aboard Music with DJ Felipe
DJ Felipe spins your favourite hits. Weather permitting.
Lido Pool, Deck 9, Aft

6pm

6.00pm Recorded Ballroom & Latin Music
Queens Room, Deck 2, Midships (until 8.30pm)

6.00pm Meet Your Host: Guided Tour
Join our host for a guided tour of the casino and get exclusive insight into the exciting world of gaming.
Casino, Deck 2, Forward (until 7.00pm)

6.00pm Welcome On Board Portrait
Just in case you missed us, we are back in the Grand Lobby this evening. Find us for your embarkation portrait, featuring our ship's telegraph to commemorate the start of your voyage.
Grand Lobby, Deck 2, Midships (until 9.00pm)

6.15pm Pianist George Gazsi
Commodore Club, Deck 10, Forward (until 7.00pm)

6.15pm Guitarist Emil Nikolov
Grand Lobby, Deck 1, Midships (until 7.00pm)

7pm

7.00pm Showcase your Jewellery
Throughout our lives there are many milestones that are often expressed with pieces of jewellery. Our on board jewellers would like to give you the opportunity to share with us the history and story behind the pieces most special to you.
Fine Jewellery Boutique, Royal Arcade, Deck 3 (until 10.00pm)

7.00pm First Time Lucky - Welcome Bonus
Fancy trying your luck on the slots but don't know where to start? Let our host show you around and help get you started. Spend your first \$20 in the slots and receive an extra \$5. See the Casino Staff for more details.
Casino, Deck 2, Forward

7.15pm Guitarist Emil Nikolov
Grand Lobby, Deck 1, Midships (until 8.00pm)

7.15pm Pianist George Gazsi
Commodore Club, Deck 10, Forward (until 8.00pm)

7.30pm Welcome On Board From Clarendon Fine Art
Visit the gallery today to meet Sam and Gemma and receive a guide to the seminars they will host.
Clarendon Fine Art Gallery, Deck 3, Midships

8pm

8.00pm Tonight's Highlight Entertainment: Be Our Guest
Featuring the Royal Court Theatre Company.
Presented by Entertainment Director, Sally Sagoe.
Royal Court Theatre, Decks 1, 2 & 3, Forward

8.45pm Piano Entertainer Clarolyn Maier
From the Hits of Broadway to the Great American Songbook.
Commodore Club, Deck 10, Forward (until late)

8.45pm The EOS Strings
Enjoy the classical and contemporary repertoire of our resident string trio.
Grand Lobby, Deck 1, Midships (until 9.30pm)

8.45pm Staple Hill Duo
Golden Lion Pub, Deck 2, Forward (until 9.15pm)

8.45pm Ballroom & Latin Dance Music
Queens Room, Deck 2, Midships (until late)

9pm

9.00pm New Amsterdam Duo
Garden Lounge, Deck 9, Midships (until 9.45pm)

9.00pm DJ Felipe Spins the Hits
Join our resident DJ in Queen Elizabeth's late night hotspot as he plays a range of music that is sure to get you on your feet.
Yacht Club, Deck 10, Forward (until 10.45pm)

9.15pm Welcome Aboard Quiz
Give it your best guess and meet the Entertainment Team in this exciting and challenging quiz.
Golden Lion Pub, Deck 2, Forward

9.45pm The EOS Strings
Enjoy the classical and contemporary repertoire of our resident string trio.
Grand Lobby, Deck 1, Midships (until 10.30pm)

10pm

10.00pm Tonight's Highlight Entertainment: Be Our Guest
Featuring the Royal Court Theatre Company.
Presented by Entertainment Director, Sally Sagoe.
Royal Court Theatre, Decks 1, 2 & 3, Forward

10.00pm New Amsterdam Duo
Garden Lounge, Deck 9, Midships (until 10.45pm)

10.00pm Staple Hill Duo
Golden Lion Pub, Deck 2, Forward (until 11.00pm)

10.45pm Welcome Aboard Disco with DJ Felipe
Yacht Club, Deck 10, Forward (until 11.45pm)

10.45pm The EOS Strings
Enjoy the classical and contemporary repertoire of our resident string trio.
Grand Lobby, Deck 1, Midships (until 11.30pm)

11pm

11.00pm Late Night Wipeout Trivia
The trivia with a twist. Will you keep all your points?
Hosted by the Entertainment Team.
Golden Lion Pub, Deck 2, Forward

11.00pm New Amsterdam Duo
Garden Lounge, Deck 9, Midships (until 11.45pm)

11.30pm Staple Hill Duo
Golden Lion Pub, Deck 2, Forward (until late)

11.45pm Late Night Dancing with DJ Felipe
Yacht Club, Deck 10, Forward (until late)

MAREEL

WELLNESS & BEAUTY

1.30pm Spa Introduction & Giveaway

From gentle rippling waves that soothe and lull, to the invigorating surf that sculpts and purifies, Mareel takes inspiration from the oceans on which our ships sail to indulge your senses – mind, body and soul. Discover a sanctuary of calm and explore experiences at our spa, beauty and fitness facilities that refresh and transform. Don't miss your chance to win \$500 worth of luxurious treatments. Visit us on Deck 9 to collect a spa brochure.

5.00pm Walk-In Pain Clinic

Learn how traditional Chinese medicine can help you feel better today.

5.00pm Walking in Comfort

Overcome needless lower back pain, aching shoulders, and foot problems with a few tips from our experts. Visit and receive a complimentary foot analysis to address your individual concerns.

5.30pm Advanced Facial Rejuvenation with Dr. Claudia Gonzalez M.D.
Learn more about instant anti-ageing remedies to restore and rejuvenate the contours of your skin.

Mareel Wellness & Beauty Spa, Deck 9, Forward



Shipboard information.

Assistive listening devices.

For guests who are hard of hearing, assistive listening devices (headsets and neckloops) are available at the Purser's Office located on Deck 1 in the Grand Lobby. These devices can be utilised in the Royal Court Theatre and Queens Room.

Alcohol policy.

Guests under 18 years of age are not permitted to purchase or consume alcohol on board. Please be aware that proof of age by means of government issued photographic identification, may be requested. Guests under the age of 18 years are also not permitted in the Yacht Club after 11.00pm.

Assembly Station familiarisation.

It is a maritime requirement that all guests attend their assembly station for familiarisation purposes prior to 4.30pm. If you have not already done so, please visit your Assembly Station where your Voyage card will be scanned to record your attendance. Your allocated Assembly Station is as indicated on the back of your stateroom door, boarding pass and Voyage card. There is no need to take your life jacket with you. We ask that all guests watch the Cunard safety video on your stateroom television, channel 57.

Credit or debit card note.

If you are settling your account with a credit or debit card, please ensure the card registered with us is the card you wish to settle your on board account with at the end of your voyage. We accept all major credit and debit cards, however we are unable to accept prepaid debit or foreign currency cards.

Environmental.

In order to ensure that the world's oceans and our many beautiful and unique voyage destinations remain pristine, Cunard Line prides itself on maintaining the highest standards of compliance with regards to national and international laws for the protection of the environment. In order to help save fuel and fresh water, guests are kindly asked to turn lights and televisions off when not in their staterooms and not to leave taps running unnecessarily. This would help us with our Environmental Policy, ISO 14001 and 5001, which requires us to continually improve our environmental management and reduce our carbon footprint.

How to keep healthy on board.

So as to limit your chances of becoming unwell, we recommend you take the following precautionary measures:

- Wear a face mask when moving around indoors and when seated in the theatre.
- Wash your hands often and use hand sanitiser when hand-washing facilities are not available.
- Cough or sneeze into a tissue or bent elbow, and not into your hands; throw used tissues in the bin and wash your hands afterwards.
- Avoid contact with anyone you know who is unwell and their close contacts.
- Remain vigilant and report any COVID-19 symptoms to the Medical team by dialling 999 or 911.
- If you are contacted by NHS Test and Trace to self-isolate whilst on board, please contact the Medical team immediately by dialling 999 or 911.

Restricted access.

Please be advised that for operational reasons, some sections towards the rear of the ship are inaccessible. The Fire Screen Doors have been closed and signs placed on these doors. No one is permitted to pass through these areas. Guests are advised that to access areas at the other side of these doors, you should use Decks 2, 3, 4, 7 (starboard side), 8 or 9.

Smoking policy.

Smoking is not permitted in all indoor and outdoor public spaces, apart from designated smoking areas on the starboard side of Decks 3 and 10. Please be aware smoking is also not permitted in your stateroom/suite or on your balcony, including the area/walkway above the canvas canopy linking the port and starboard side. Electronic cigarettes and vaporising devices, including those which do not emit smoke/vapour, are permitted in designated smoking areas only.

My Voyage.

Explore MyVoyage, our on board digital planner, and make on board dining reservations, join a virtual queue and access your on board account at any time of the day or night.



Explore My Voyage by simply connecting to 'Cunard_Guest_WIFI' and visiting myvoyage.cunard.com or by opening your device's camera, hovering over the QR code displayed and selecting the pop-up screen.

You can also make reservations by calling our dedicated reservations line on 38000, available from 1.00pm to 8.00pm.

How to logon to the ship's Wi-Fi.

- Connect to the ship's Wi-Fi network by selecting Cunard_Guest_WIFI, please then type 'login.com' into your internet browser.
- Follow the on-screen instructions, making sure the 'ID Card number' is the final four digits from your Voyage card (stateroom key).
- Keep your details safe by using a memorable username and password.
- Select your satellite internet package and check out.
- Switching off the ship's Wi-Fi, or turning off your device will not terminate your session and your minutes will run out. Simply type logout.com in your internet browser then press go or enter, when you want to disconnect. A summary of the amount of minutes you have used will be displayed. This confirms that you have successfully logged out.

For assistance, visit the Library on Decks 2 and 3, midships during the opening hours.

Mobile phone roaming charges.

If you plan to use your mobile phone or device during the voyage, it is important to know that once we sail away, your phone may go into roaming mode and automatically connect to an at-sea Maritime network provider. Although, when we are near a shoreline or in port, your mobile signal will typically switch to a carrier from the country or island we're visiting. In both instances, roaming charges may apply and are usually costly. To avoid unnecessary and unexpected charges, we recommend you switch off 'roaming' on your personal device.

Queen Elizabeth orientation.

The port side of the ship has even numbered staterooms, while the starboard side has odd numbered staterooms. Numbers begin at the front of the ship and go up the further back they are. Our stairways are lettered: A is forward, B is midships and C is aft. There are maps of the ship as well as directional signs placed near the lifts. We hope this assists you in becoming familiar with our ship.

Safety notice.

As your safety is our prime concern, we would like to remind you of some important precautions you must take while in your stateroom or on your balcony.

- Never use lighted candles, naked flames or any other burning material either in your stateroom or on your balcony.
- Heated electrical items (such as curling irons) used in your stateroom should not be left plugged in and unattended. When finished with the item, ensure it is unplugged.
- The use of irons and non-thermostatically controlled water heaters is strictly prohibited.
- Do not hang clothing out or leave personal items unattended on the balcony.
- Before retiring for the evening bring all personal items inside.
- Do not place any items on top of the light fittings.

Tour office.

Please be advised that any pre-booked tour tickets will be delivered directly to your stateroom. Check your tickets carefully as departure times may have changed. If you have any questions or would like to know more about the Shore Experiences for this voyage, call the On Board Reservations on 38000, press Option 2 for the Tour Office, check My Voyage digital planner, or visit the Tour Office. Excursions are the best way to make the most of your day ashore.

Dining Times.

Queens Grill (Deck 11, Stairway B).

Lunch:..... 1.00pm to 2.30pm
Dinner: 6.30pm to 9.00pm

Princess Grill (Deck 11, Stairway B).

Lunch:..... 1.00pm to 2.30pm
Dinner: 6.30pm to 9.00pm

Britannia Club (Deck 2, Stairway B).

Dinner: 6.30pm to 9.00pm

Britannia Restaurant (Decks 2 & 3, Stairway C).

Dinner:
..... Please refer to the dining reservation card in your stateroom.

Lido Buffet (Deck 9, Stairway B).

Lunch:..... 1.00pm to 4.00pm
Dinner (Port Side):..... 6.00pm to 9.00pm
Late Night Snack: 10.00pm to 12.00am

Golden Lion (Deck 2, Stairway A).

Pub Lunch:..... 1.30pm to 4.00pm

Bars & Lounges.

Café Carinthia (Deck 2, Stairway B):..... 12.00pm to 12.00am
Commodore Club (Deck 10, Stairway A):..... 3.00pm to 1.00am
Garden Lounge (Deck 9, Stairway B): 1.30pm to 11.30pm
Golden Lion (Deck 2, Stairway A): 1.30pm to late
Lido Bar, weather permitting (Deck 9, Stairway C):.....
..... 1.30pm to 10.00pm
Midships Gin & Fizz Bar (Deck 3, Stairway B):.....
..... 5.00pm to 12.00am
Yacht Club (Deck 10, Stairway A):..... 9.00pm to late

Retail and Services.

All facilities will be closed for the duration of the Captain's Emergency Procedure Broadcast.

Art Gallery:..... 6.00pm to 9.00pm
Bookshop:..... 6.30pm to 10.00pm
Casino Slots & Tables: 7.00pm to late
Port Shop:..... 6.30pm to 10.00pm
Royal Arcade: 6.30pm to 10.00pm
The Photo Gallery:..... Closed
Welcome On Board Portrait:
Grand Lobby, Deck 3, Midships:..... 2.00pm to 4.00pm
Grand Lobby, Deck 2, Midships:..... 6.00pm to 9.00pm
On Board Reservations (ext. 38000): 1.00pm to 8.00pm
Internet Assistance: Library 1.00pm to 7.00pm
Library:..... 1.00pm to 7.00pm
Medical Centre:
..... By appointment only, dial 8880 from 3.00pm to 5.00pm
In case of an emergency dial 999/911.
Mareel Fitness Centre: 1.00pm to 8.00pm
Mareel Spa & Salon:..... 1.00pm to 8.00pm
Tour Office: 2.00pm to 6.00pm
Voyage Sales: By appointment only, please dial 33000
Lido Pool, weather permitting (Deck 9, Stairway C):
..... 7.00am to 9.00pm
Lido Jacuzzi (Deck 9, Stairway C):..... 7.00am to 9.00pm
Pavilion Pool, weather permitting (Deck 9, Stairway A):
..... 7.00am to 9.00pm
Pavilion Jacuzzi (Deck 9, Stairway A):..... 7.00am to 9.00pm
Please be advised that the hot tubs and swimming pools are not supervised.
Sports Equipment Available (open decks):..... 1.00pm to 8.00pm

What to wear.

Tuesday, 16 November Gala Evening Attire (Black & White)*
Wednesday, 17 November..... Smart Attire
Thursday, 18 November (Lisbon, Portugal) Smart Attire
Friday, 19 November (Cádiz, Spain)..... Smart Attire
Saturday, 20 November Gala Evening Attire (Red and Gold)*
Sunday, 21 November (Valencia, Spain) Smart Attire
Monday, 22 November (Cartagena, Spain) Smart Attire
Tuesday, 23 November (Málaga, Spain)..... Smart Attire
Wednesday, 24 November (Gibraltar) Smart Attire
Thursday, 25 November..... Gala Evening Attire (Roaring 20s)*
Friday, 26 November Smart Attire

Gala Evenings.

Dinner jacket, tuxedo, or dark suit with regular tie or bow tie for gentlemen. Evening or cocktail dress, smart trouser suit, or formal separates for ladies.

*Guests are welcome to embellish their Gala Evening attire to fit the applicable theme of the evening, for Black & White night, by dressing in simple, monochrome finery, for Red and Gold night, celebrate the best of Cunard, turn up the glamour with your finest red and gold evening wear, and for Roaring 20s night, go all out glamour or adorn a flourish which embraces the spirit of the decade.

Smart Attire.

Gentlemen, every night we request you wear trousers with a collared shirt; jacket and tie is optional. Ladies, blouses and skirts or stylish trousers and dresses are welcome.

Relax.

Feel free to dress casually as you visit any of the following venues: Lido Restaurant, Golden Lion, Casino, Café Carinthia, Garden Lounge and Yacht Club.

Non-ripped jeans are appropriate, but please refrain from wearing shorts, sports attire, swim wear or sleeveless t-shirts outside of the gym, spa and deck spaces.

Britannia Restaurant seating enquiries.

The lower level of the Britannia Restaurant on Deck 2 will be open from 2.00pm to 4.00pm for seating enquiries. Kindly note that table assignments have been allocated by the date you booked your voyage. Please refer to your booking terms and conditions.

Intermittent connectivity.

During our stay in Southampton, we are likely to experience intermittent connectivity due to signal interference. We apologise for the inconvenience and thank you for your understanding.

My Voyage - help desk.

MyVoyage is the new on board digital planner giving you the freedom to personalise your voyage experience.



If you would like assistance or have questions, please come along to our help desk today at the following location and time:

- Grand Lobby, Deck 2, Stairway B, opposite Steakhouse at The Verandah 2.00pm to 6.00pm

Returning to Southampton.

If you haven't already done so, before you disembark at the end of your voyage you must complete a Passenger Locator Form (PLF). This is a UK Government requirement and applies to all guests, even if the United Kingdom is not your final destination.

You can access the form at <https://www.gov.uk/provide-journey-contact-details-before-travel-uk> from any internet enabled device or by opening your device's camera, hovering over the QR code displayed and selecting the pop-up screen. If you need assistance please call the Purser's Office on extension 33000. Upon return to Southampton, UK Border Force could be in attendance in the terminal to verify the Passenger Locator Forms.



Voyage card.

We kindly ask all guests not to punch a hole in the Voyage card as this will damage the microchip in your Voyage card. There are lanyards available for purchase in the Port Shop on Deck 2, midships.



Discover.

Getting the most from your voyage.

Monday, 15 November 2021

Tax and Duty free shopping.

Visit the Royal Arcade Boutiques where everything is tax and duty free.

We have an extensive range of fine jewellery, watches, fragrances, clothing and voyage souvenirs. Visit us today to find out what is on offer, and discover our upcoming promotions and seminars.

Royal Arcade Boutiques, Decks 2 & 3



Welcome on board portrait.

Join us in the Grand Lobby to mark the occasion with a replica ship's telegraph for an embarkation portrait to commemorate your voyage.

There is no obligation to purchase and you can view them tomorrow in The Photo Gallery on Deck 3, aft.

From 2.00pm to 4.00pm, Grand Lobby, Deck 3, Midships & 6.00pm to 9.00pm, Grand Lobby, Deck 2, Midships

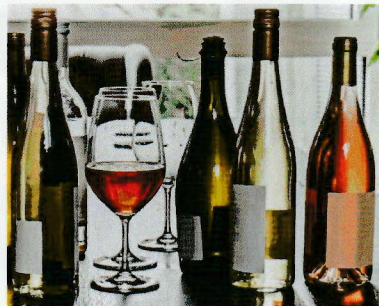


Cunard wine collection.

Our expert Sommeliers have hand-picked a range of fine wines from around the world to create two distinctly different yet equally exquisite wine collections.

From crisp whites to full-bodied reds, each Cunard wine collection comprises an exceptional mix of wines for you to choose from to create your personal collection. The Captain's Collection offers a saving of up to 15% off regular wine list prices. The Commodore's Collection offers a saving of up to 20% off regular wine list prices.

Speak to your Restaurant Sommelier or call the Chief Sommelier on 14321 for more information about the wine available on board



Showcase your jewellery.

Throughout our lives there are many milestones that are often expressed with pieces of jewellery.

Our resident jeweller would like to give you the opportunity to share with us the history and story behind the pieces most special to you.

From 7.00pm until 10.00pm, Fine Jewellery Boutique, Royal Arcade, Deck 3



Welcome on board from Voyage Sales.

Charlotte and Christopher, your Loyalty and Voyage Sales Specialists, welcome you on board Queen Elizabeth, your home away from home.

If you would like to take advantage of our exclusive on board booking benefits please call the Purser's Office on 33000 to book an appointment with Charlotte or Christopher, at a time convenient to you.

Book your next Cunard voyage on board and receive up to \$400 per person on board spending money on your future voyage, secure your booking with only a low deposit. Terms and conditions apply.

Voyage Sales Office, Deck 1, Port Side, Grand Lobby



Gin & Fizz at Midships.

Gin....comprises a collection of our favourite gins from across the globe.

All perfect serves are presented in a "Copa de Balon" with a tonic and garnish pairing that has been carefully selected to bring out the best of the gin and highlight its botanical makeup.

Fizz...from signature Champagnes

to a global selection of Sparkling Wines, our fizz menu captures distinctive touches of class from every corner of the world.



Indulge in a refreshing gin cocktail on Deck 3, Midships

Spa Introduction & Giveaway.

From gentle rippling waves that soothe and lull, to the invigorating surf that sculpts and purifies, Mareel takes inspiration from the oceans on which our ships sail to indulge your senses – mind, body and soul.

Discover a sanctuary of calm and explore experiences at our spa, beauty and fitness facilities that refresh and transform.

Don't miss your chance to win \$500 worth of luxurious treatments.

Visit us on Deck 9 to collect a spa brochure.

From 1.30pm, Mareel Wellness & Beauty Spa, Deck 9, Forward

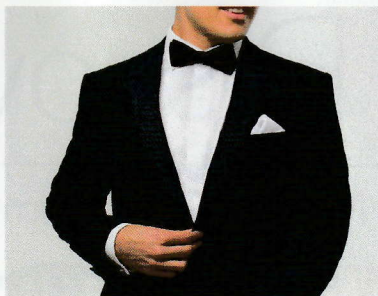
MAREEL
WELLNESS & BEAUTY

Formal suit hire.

Look your best for the upcoming gala evenings with our formal rental service available on board.

Whether it's a full suit to ensure you look the part or a smart jacket to finish off your look, please visit us in store for more details.

**From 6.30pm, Fashion Boutique,
Royal Arcade, Deck 3, Between Stairway A & B**



First time lucky - welcome bonus.

Fancy trying your luck on the slots but don't know where to start?

Let our host show you around and help get you started with a \$5 welcome bonus when you spend your first \$20.

From 7.00pm, Casino, Deck 2, Forward



Port shop essentials.

Forgotten something?

Visit our Port Shop where we stock everything you will need for your voyage. From toiletries, plug adaptors and batteries to a wide range of savoury and sweet snacks.

Port Shop, Deck 2, Midships



Welcome on board from Clarendon Fine Art.

Our award-winning gallery on board Queen Elizabeth is proud to showcase an eclectic range of original and limited edition artwork. Including artists such as L.S. Lowry, Sherree Valentine Daines and Mr Brainwash the collection changes on a daily basis.

Visit the gallery today to meet Sam and Gemma and receive a guide to the seminars they will host.

From 7.30pm, Clarendon Fine Art Gallery, Deck 3



Private photo shoots.

Are you celebrating a special occasion or wanting to capture your special holiday memories?

Enjoy a bespoke photo shoot around Queen Elizabeth's most famous and beautiful locations. Come visit our friendly photographers to find out how you can book in your private shoot today.

The Photo Gallery on Deck 3, Aft will be open tomorrow



Cunard World Club benefits.

During this voyage we are delighted to offer the below Cunard World Club benefits:

Gold Member Benefits:

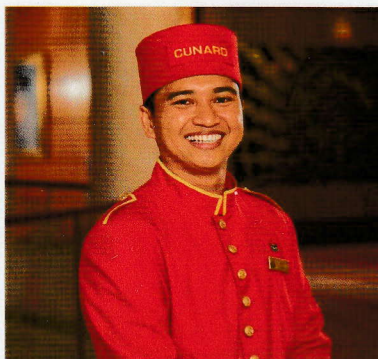
- 2 hours complimentary Internet

Platinum Member Benefits:

- 4 hours complimentary Internet
- Complimentary wine tasting
- 10% White Star luggage discount
- 20% discount Dry Cleaning and Laundry (after your on board credit is spent)

Diamond Member Benefits:

- 8 hours complimentary Internet
- Complimentary wine tasting
- 10% White Star luggage discount
- 20% discount Dry Cleaning & Laundry (after your on board credit is spent)
- A complimentary Lunch in the Steakhouse at The Verandah



For more information contact the Purser's Office on 33000



Walk-in Pain Clinic.

At 5.00pm

Learn how traditional Chinese medicine can help you feel better today.

Walking in Comfort.

At 5.00pm

Overcome needless lower back pain, aching shoulders, and foot problems with a few tips from our experts.

Visit and receive a complimentary foot analysis to address your individual concerns.

Advanced Facial Rejuvenation with Dr. Claudia Gonzalez M.D.

At 5.30pm

Learn more about instant anti-ageing remedies to restore and rejuvenate the contours of your skin.

**Mareel Wellness & Beauty Spa,
Deck 9, Forward**

MAREEL

WELLNESS & BEAUTY

World of Drinks.

Add an additional layer of convenience and flexibility to your voyage with one of our drinks options.

Affording you the opportunity to cover your bar tab in advance, for a fixed daily price, our selection of drinks options includes most drinks served on board and start from as little as \$10 per person, per day.



**Please note:
All drink options are only available on voyages of five nights or more, for purchase only on the first two days of the voyage and must be purchased for all remaining days of your voyage.**