

Queen Mary 2 Voyage M938

Saturday, 23 November 2019

Sunrise 7.16am

Sunset 4.30pm



Tonight: Smart Attire  
Jacket required, tie optional for gentlemen,  
Cocktail dress stylish separates or equivalent for ladies.



# Daily Programme.



## At sea en route to New York.

### From the Navigator.

Today we will pass to the south of the Grand Banks of Newfoundland, where the water rapidly shallows from over 3,000 metres to less than 60 metres in parts. The Grand Banks form part of the continental shelf extending from Newfoundland and North America into the Atlantic. Known for both its abundance of marine life as well as infamous fog patches, the Grand Banks are a rich natural resource.



### Classical Concert: Pianist Vicky Yannoula.

Romanticism Crossing Over: Beethoven to Chopin. Pieces exploring the romantic style in contrasting structures and forms.

**At 2.30pm, Illuminations,  
Deck 3, Stairway B**

### Singer Song Writers Hour With Amethyst.

Join Paul and Kathryn from Amethyst Duo as they take you on a journey of "Classic" songs from a selection of some of the great singer/songwriters such as Neil Diamond and Billy Joel.

**At 9.45pm until 10.45pm,  
Golden Lion Pub, Deck 2, Stairway C**

### Dance Through The Decades With Purple Haze.



Twist, Hustle, Moon Walk, & Macarena your way back in time with party band Purple Haze as they rock the Queen's Room tonight, one decade at a time. Hosted by Social Host, Tommi & the Entertainment Team.

**From 9.45pm until 12.00am,  
Queens Room, Deck 3, Stairway D**

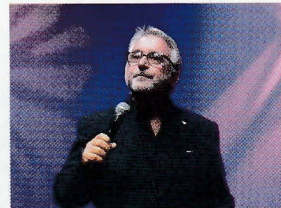
### Tonight's Featured Entertainment.

### Variety Show, featuring Jeff Stevenson & Jeri Sager.

Back with brand new performances, enjoy more laughs from London with Jeff Stevenson, followed by another hit-filled show by Jeri Sager.

With the Royal Court Theatre Orchestra, under the direction of Jeff Hughes. Presented by Assistant Entertainment Director, John Consiglio.

**At 8.45pm & 10.30pm,  
Royal Court Theatre, Decks 2 & 3, Stairway B**

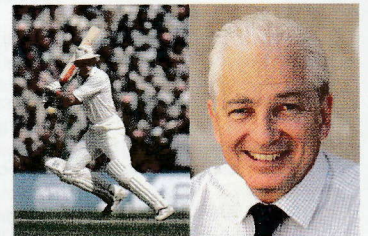


### Celebrity Lecturer, David Gower.

'The West Indies and India' - Tales of the ups and downs of playing against 2 of the powerhouses of international cricket.

Since retirement in 1993 David has established himself as one of the foremost commentators on the game and for the last 20 years has presented Sky's international coverage. He has written several books with his latest autobiography "An Endangered Species", the best of them. He is a renowned after dinner speaker and has this year been performing his one man show On the Front Foot in theatres around the UK.

**At 11.00am,  
Royal Court Theatre, Deck 2, Stairway B**



### Chris Frame.

'The White Star Line: First to Southampton'.

Merged with Cunard during the Great Depression, the White Star Line was once a fierce competitor on the North Atlantic Ocean. White Star's links to Southampton predate Cunard's, yet White Star suffered from a difficult and unlucky history. In this lecture we explore this line's turbulent past, from its conception in the 1800s and early disasters, to the triumph of the Olympic-Class liners; ending in tragedy with the loss of Titanic and Britannic. Chris Frame details the turbulent post-war years, the successes of the roaring-20s and the eventual decline of White Star Line in the 1930s, ending with their merger with Cunard.

**At 10.00am,  
Illuminations, Deck 3, Stairway B**

### Susan Humphris.

'Rivers in the Atlantic: How They Control Climate'.

About 1,000 years ago, Europe's climate was warm. A few centuries later, a "Little Ice Age" froze harvests and sent glaciers coursing down European mountainsides. This lecture will look at how the ocean's circulation, particularly in the North Atlantic, influences our climate.

**At 4.00pm,  
Illuminations, Deck 3, Stairway B**







# Today's activities.

6am

**6.00am Movie: 'Mary Poppins Returns'**  
Yesterday's theatre movie, repeated continuously on stateroom T.V. Channel 24.

**6.00am Good Morning Queen Mary 2**  
Your guide to today's entertainment and activities, with Entertainment Director, Catherine Kennedy and guests.  
**Stateroom T.V. Channel 23 (repeated continuously until 12.00pm)**

8am

**8.30am Catholic Mass**  
With Father Charles Bourke.  
**Illuminations, Deck 3, Stairway B**

9am

**9.00am Christian Fellowship Gathering (unhosted)**  
**Boardroom, Deck 9, Stairway A (Port)**

**9.00am Foil Fencing: Class A**  
An introduction to Fencing, Class A. Spaces are limited to 12 guests. With a member of the Entertainment team.  
**Queens Room, Deck 3, Stairway D**

**9.30am Table Tennis Tournament**  
**Pavilion Pool, Deck 12, Stairway B**

**9.30am English Premier League Football**  
West Ham United vs. Tottenham Hotspur (Satellite reception permitting.)  
Broadcast on stateroom T.V. Channel 42.  
**Golden Lion Pub, Deck 2, Stairway C (Starboard)**

**9.30am Beginners Bridge Lesson**  
Classes run in sequence. Led by instructor, Don Freeland.  
**Atlantic Room, Deck 11, Stairway A (until 10.15am)**

10am

**10.00am Insights Lecture: Chris Frame**  
'The White Star Line: First to Southampton'  
**Illuminations, Deck 3, Stairway B**

**10.00am Fun Fitness**  
Join Entertainment Host, Yumi for a fun work out.  
**Queens Room, Deck 3, Stairway D**

**10.00am Watercolour Art Class**  
Led by Instructor Sasha Howard. Art kits are available for \$35.00. Places limited to 25 guests.  
**Britannia Restaurant Upper, Deck 3, Stairway C (Port and Forward)**

**10.00am TAG Heuer Seminar**  
Join our Watch specialist, Borislav as he talks you through the TAG Heuer story. Please see Discover page for more details.  
**Jewellery Boutique, Deck 3, Grand Lobby, Stairway B**

**10.30am Morning Trivia**  
Who will be crowned today's trivia champions?  
**Chart Room, Deck 3, Stairway C (Starboard)**

**10.30am Deck Quoits Tournament**  
**Deck 12, Stairway B (Outside, Port)**

**10.30am Intermediate Bridge Lesson**  
Classes run in sequence. Led by instructor, Don Freeland.  
**Atlantic Room, Deck 11, Stairway A (until 11.15am)**

**10.30am Solo Travellers' Coffee Morning**  
Meet other independent guests with your Social Host, Tommi Baxter-Hill for an informal get together.  
**Carinthia Lounge, Deck 7, Stairway B (until 11.15am)**

11am

**11.00am Celebrity Speaker: David Gower**  
'The West Indies and India.'  
**Royal Court Theatre, Decks 2 & 3, Stairway B**

**11.00am Cunard and Southampton Centenary SeaCity Museum Exhibition**  
Museum Curator Maria Newbery will be on hand to discuss the exhibition to answer your questions. Maria is the Curator of Maritime and Local History Collections and part of the team that created Southampton's maritime museum, SeaCity Museum.  
**Grand Lobby, Deck 3, Stairway B (until 12.00pm)**

**11.00am Veteran's Get Together**  
Informal get together for all serving and ex serving men and women.  
**Boardroom, Deck 9, Stairway A (Port)**

**11.00am Social Target Golf (unhosted)**  
**Deck 13, Stairway B (Outside)**

**11.15am Killer Darts**  
**Golden Lion Pub, Deck 2, Stairway C (Starboard)**

11am

**11.30am Silly Putting Tournament**  
**Pavilion Pool, Deck 12, Stairway B**

**11.30am English Premier League Football**  
Arsenal vs. Southampton (Satellite reception permitting.)  
Broadcast on stateroom T.V. Channel 42.  
**Golden Lion Pub, Deck 2, Stairway C (Starboard)**

12pm

**12.00pm Eight Bells**  
**Grand Lobby, Decks 2 & 3, Stairway B**

**12.00pm Navigational Announcement**  
Information from the Bridge over the public address system.

**12.15pm Ballroom Dance Class: Tango**  
With Dance Instructors, Sasha and Daria.  
**Queens Room, Deck 3, Stairway D (until 1.00pm)**

**12.30pm Planetarium: 'Wildest Weather in the Solar System'**  
See back page for details.  
**Illuminations, Deck 3, Stairway B**

**12.30pm Blackjack Tournament**  
No expertise required, just a bit of luck! Please see Discover page for more details.  
**Empire Casino, Deck 2, Grand Lobby (Port)**

**12.30pm Lunchtime Melodies**  
With Pianist & Musical Director Jeff Hughes.  
**Carinthia Lounge, Deck 7, Stairway B (until 1.15pm)**

**12.30pm Poolside Music with Purple Haze**  
**Pavilion Pool, Deck 12, Stairway B (until 1.15pm)**

1pm

**1.00pm Planetarium: 'Wildest Weather in the Solar System'**  
See back page for details.  
**Illuminations, Deck 3, Stairway B**

**1.15pm Queen Mary 2 Guest Choir Rehearsal**  
A rehearsal for those guests who wish to take part in the Guest Choir.  
**G32, Deck 3, Stairway D**

**1.30pm The Great Queen Mary 2 Photo Scavenger Hunt Redemption**  
Did you locate all of the clues from yesterday's Scavenger Hunt? Stop by to claim your prize with the Entertainment Team.  
**Grand Lobby, Deck 2 only, Stairway B**

**1.30pm Planetarium: 'Wildest Weather in the Solar System'**  
See back page for details.  
**Illuminations, Deck 3, Stairway B**

2pm

**2.00pm Line Dancing**  
With Entertainment Host, Yumi.  
**Queens Room, Deck 3, Stairway D**

**2.00pm Watercolour Art Class**  
This is a repeat of this morning's class. Art kits are available for \$35.00.  
**Britannia Restaurant Upper, Deck 3, Stairway C (Port)**

**2.00pm Why Do People Spend Millions On Art**  
Join your art director Alex. Please see Discover page for more details.  
**Clarendon Art Gallery, Deck 3L, Stairway C (Starboard)**

**2.00pm Shuffleboard Tournament**  
**Deck 13, Stairway B (Outside)**

**2.00pm Duplicate Bridge Tournament**  
**Atlantic Room, Deck 11, Stairway A (until 4.00pm)**

**2.00pm Social Bridge and Whist**  
**ConneXions Room 4 & 5, Deck 2, Stairway A (until 4.00pm)**

**2.30pm Quick Hit Music Trivia**  
You'll know the songs, will you remember the titles?  
**Chart Room, Deck 3, Stairway C (Starboard)**

**2.30pm Classical Concert: Pianist Vicky Yannoula**  
'Romanticism Crossing Over'.  
**Illuminations, Deck 3, Stairway B**

**2.30pm English Premier League Football**  
Manchester City vs. Chelsea (Satellite reception permitting.)  
Broadcast on stateroom T.V. Channel 42.  
**Golden Lion Pub, Deck 2, Stairway C (Starboard)**

3pm

**3.00pm Social Target Golf (unhosted)**  
**Deck 13, Stairway B (Outside)**





# Today's Activities.

3pm

3.00pm Spot The Replica - Competition  
Please see Discover page for more details.  
**Jewellery Boutique, Deck 3, Grand Lobby, Stairway B**

3.00pm Hooplah Tournament 🎯  
**Pavilion Pool, Deck 12, Stairway B**

3.00pm Host Corner: Needlework & Knitting  
Bring your own knitting and needlework projects for an informal gathering with Social Host, Tommi Baxter-Hill Please be advised this is not a class.  
**Carinthia Lounge, Deck 7, Stairway B (until 4.00pm)**

3.30pm Afternoon Tea with Pianist Akos Symogyi  
**Queens Room, Deck 3, Stairway D (until 4.30pm)**

4pm

4.00pm Complimentary Golf Competition 🏌️‍♂️  
Longest Drive closest to the pin. Places are limited. Sign up from 9.30am.  
**The Fairways, Deck 12, Stairway B**

4.00pm Insights Lecture: Susan Humphris  
'Rivers in the Atlantic: How They Control Climate'.  
**Illuminations, Deck 3, Stairway B**

4.00pm Golden Pearl Showcase  
The Golden Pearl remains one of the rarest and most special varieties of Pearl available. View our exquisite collection featuring unique designs, bought on board by guest Jeweller Sun-Ah. This collection is available for a limited time only.  
**Jewellery Boutique, Deck 3, Grand Lobby, Stairway B**

4.00pm Friends Of Bill W.  
**Boardroom, Deck 9, Stairway A (Port) (until 5.00pm)**

4.15pm Afternoon Trivia 🎲  
With a member of the Entertainment Team.  
**Chart Room, Deck 3, Stairway C (Starboard)**

5pm

5.00pm Snowball Jackpot Bingo  
Come and join our Snowball Jackpot Bingo and you could win one of three cash prizes plus the Jackpot prize for the day.  
**Golden Lion Pub, Deck 2, Stairway C (Starboard)**

5.00pm LGBT Social Hour  
**Commodore Club, Deck 9, Stairway A (Starboard) (until 6.00pm)**

5.15pm Accoustic Duo: Cassie & Maggie  
**Carinthia Lounge, Deck 7, Stairway B (until 6.00pm)**

5.15pm Pianist Akos Somogyi  
**Chart Room, Deck 3, Stairway C (Starboard) (until 6.00pm)**

5.15pm Pre-Recorded Dance Class Music  
An opportunity to practice those steps taught at our ballroom dance classes. This event is unhosted, however Dance Instructors Sasha and Daria will be on hand to answer your questions.  
**Queens Room, Deck 3, Stairway D (until 6.00pm)**

5.30pm Movie: 'Rocketman'  
A musical fantasy about the fantastical human story of Elton John's breakthrough years. Starring: Taron Egerton, Jamie Bell, Richard Madden. Rated 15. Duration: 121 minutes.  
(Repeated continuously tomorrow on Channel 24)  
**Illuminations, Deck 3, Stairway B**

7pm

7.30pm Guitarist Paul Garthwaite  
With Paul Garthwaite from Amethyst.  
**Golden Lion Pub, Deck 2, Stairway C (Starboard)**

7.45pm Accoustic Duo: Cassie & Maggie  
**Carinthia Lounge, Deck 7, Stairway B (until 8.30pm)**

7.45pm Pianist Akos Somogyi  
**Chart Room, Deck 3, Stairway C (Starboard) (until 8.30pm)**

7.45pm Pianist Steve Zackim  
**Commodore Club, Deck 9, Stairway A (until 8.30pm)**

7.45pm Sequence Dancing  
Hosted by your Social Host, Tommi Baxter-Hill  
**Queens Room, Deck 3, Stairway D (until 8.30pm)**

8pm

8.00pm Wipeout Trivia  
**Golden Lion Pub, Deck 2, Stairway C (Starboard)**

8.00pm Movie: 'Rocketman'  
Please see the 5.30pm listing for more details.  
**Illuminations, Deck 3, Stairway B**

8pm

8.30pm Recorded Ballroom & Latin Dance Music  
**Queens Room, Deck 3, Stairway D (until 9.45pm)**

8.45pm Showtime: Jeff Stevenson and Jeri Sager  
**Royal Court Theatre, Decks 2 & 3, Stairway B**

9pm

9.30pm The Jazz Club  
With the Vladimir Zinchenko Trio.  
**Chart Room, Deck 3, Stairway C (Starboard) (until late)**

9.45pm Accoustic Duo: Cassie & Maggie  
**Carinthia Lounge, Deck 7, Stairway B (until 10.30pm)**

9.45pm Singer Song Writers Hour with Amethyst  
Join Paul and Kathryn from Amethyst Duo as they take you on a journey of "Classic" songs from a selection of some of the great singer/songwriters such as Neil Diamond and Billy Joel.  
**Golden Lion Pub, Deck 2, Stairway C (Starboard) (until 10.45pm)**

9.45pm Recorded Ballroom & Latin Dance Music  
**G32, Deck 3, Stairway D (until 12.00am)**

9.45pm Dance Through The Decades with Purple Haze  
Twist, Hustle, Moon Walk, & Macarena your way back in time with party band Purple Haze as they rock the Queen's Room tonight, one decade at a time. Hosted by Social Host, Tommi & The Entertainment Team.  
**Queens Room, Deck 3, Stairway D (until 12.00am)**

10pm

10.00pm Pianist Steve Zackim  
**Commodore Club, Deck 9, Stairway A (until 12.00am)**

10.30pm Showtime: Jeff Stevenson and Jeri Sager  
**Royal Court Theatre, Decks 2 & 3, Stairway B**

10.30pm Movie: 'Rocketman'  
Please see the 5.30pm listing for more details.  
**Illuminations, Deck 3, Stairway B**

11pm

11.15pm Pub Duo 'Amethyst'  
With Paul and Kathryn from Amethyst.  
**Golden Lion Pub, Deck 2, Stairway C (Starboard) (until late)**

12am

12.00am Recorded Dance Music For Enthusiasts  
**Queens Room, Deck 3, Stairway D (until 12.30am)**

12.00am All Request Express with DJ Felipe  
**G32, Deck 3, Stairway D (until late)**

**CANYON RANCH.**  
spa | beauty | fitness | wellness  
ON QUEEN MARY 2

## Fitness classes.

7.00am Fitness: Stretch and Relax - Full Body Stretch

7.30am Foot Clinic - Foot Scan & Posture Analysis

8.00am Fitness: Pilates\*

**Queens Room, Deck 3, Stairway D**

4.00pm Indoor Cycling/Spinning

5.00pm Fitness: Abs Express

**Knightsbridge Room, Deck 1, Stairway C**

\*\$12 fitness pass and previous sign up required.

## Wellbeing seminars.

10.00am Acupuncture: Question and Answer  
With Dr Sandeep.

11.00am Burn Fat Faster Seminar

1.00pm Teeth Whitening

2.00pm Chiropractic Spinal Screening

Join Dr. Ross our on board Chiropractor..

2.30pm Knee, Hip and Back Pain Seminar

Knee, Hip and Back pain can stem from poor bio-mechanics of the foot.

3.30pm Massage: Decreased mobility in hips and knees

Join our Physiotherapist Dragan and find out how to improve walking mobility of your hips and knees

4.00pm Acupuncture For Bladder Control

**All seminars take place in the Canyon Ranch SpaClub, Deck 7, Stairway A.**



## Queens Grill, Princess Grill & Britannia Club Restaurants.

Breakfast .....	8.00am to 9.30am
Lunch .....	12.00pm to 1.30pm
Dinner .....	6.30pm to 9.00pm

## Britannia Restaurant.

Breakfast .....	8.00am to 9.30am
Lunch .....	12.00pm to 1.30pm
First sitting dinner .....	6.00pm, last order 6.30pm
Second sitting dinner .....	8.30pm, last order 9.00pm
Wine Line .....	10.00am to 1.00pm
.....	Pre-order your wine for the voyage by calling 22062.

## Kings Court Buffet Deck 7 (Stairway B).

Continental Breakfast .....	5.00am to 6.30am
Full Breakfast Buffet .....	6.30am to 11.30am
Chef's Galley: Healthy Corner .....	6.30am to 11.00am
Lunch Buffet .....	11.30am to 3.00pm
Chef's Galley: Burger & Hot-Dogs Station .....	11.30am to 3.00pm
Afternoon Snack, Forward Starboard .....	3.30pm to 5.30pm
Chef's Galley: Pizza & Pasta Station .....	6.00pm to 9.30pm
Dinner Buffet: Deck 7, Forward Port .....	6.00pm to 10.30pm
Late Snack, Buffet Aft .....	11.00pm to 2.00am
Gluten Free and Lactose Free items are available at the aft buffet from 7.00am through to 3.00pm. Afternoon Tea and Dinner options are available on request at the forward main buffet, please ask the Head Waiter.	

## Kings Court Alternative Dining (Stairway C).

A \$19.50 cover charge applies. For reservations please dial 25400 between 8.00am & 6.00pm.

### Dress Code Applies.

Smokehouse (American cuisine) .....	7.00pm to 9.00pm
-------------------------------------	------------------

## Steakhouse at The Verandah.

Lunch .....	12.00pm to 1.30pm
Dinner .....	6.30pm to 9.00pm

Cover charges apply Lunch \$25.00/Dinner \$39.00.

For reservations please call 25400 between 8.00am & 6.00pm or simply drop by during opening hours.

## Bars and Lounges.

Carinthia Lounge .....	7.00am to 11.00pm
(Light snacks 8.00am to 10.00am, 12.00pm to 2.30pm & 3.30pm to 5.00pm)	
Champagne Bar .....	11.00am to late
Chart Room .....	10.00am to late
Commodore Club .....	10.00am to late
Empire Casino Bar .....	As per casino opening
Golden Lion Pub .....	10.00am to late
Pub Lunch .....	12.00pm to 2.30pm
G32 .....	9.30pm to the wee small hours
..... (Guests under the age of 18 are not permitted in G32)	
Pavilion Pool Bar .....	10.00am to 4.00pm
Sir Samuel's .....	9.00am to 11.00pm
Terrace Pool Bar (Weather permitting) .....	10.00am to 10.00pm
The Verandah Bar .....	12.00pm to 2.00pm & 6.00pm to 10.00pm
Grills Lounge (Grill guests only) .....	11.00am to 2.30pm & 6.00pm to 12.00am

## Facilities and Retail.

Book Shop .....	9.00am to 1.00pm & 2.00pm to 6.00pm
Canyon Ranch .....	8.00am to 8.00pm
Clarendon Art Gallery .....	9.00am to 9.00pm
Empire Casino Cashier: .....	10.00am to late
Empire Casino Tables: .....	11.00am to late
Images Photo Gallery .....	9.00am to 9.00pm
Internet Centre (24 hours) Assistance: .....	8.30am to 12.00pm & 2.00pm to 5.00pm & 6.30pm to 9.00pm
Library .....	9.00am to 6.00pm
Mayfair Shops .....	9.00am to 9.00pm
Medical Centre .....	9.00am to 11.00am & 4.00pm to 6.00pm
..... (For medical emergencies only, please dial 911 or 999)	
Tour Office .....	9.00am to 12.00pm & 3.00pm to 6.00pm
Voyage Sales .....	9.00am to 12.00pm & 3.00pm to 6.00pm
Baby Zone .....	10.00am to 12.00pm & 2.00pm to 5.00pm
Play Zone .....	10.00am to 12.00pm, 2.00pm to 5.00pm & 6.00pm to 11.00pm
Kids/Teen Zone .....	10.00am to 12.00pm, 2.00pm to 5.00pm & 6.00pm to 11.00pm
Night Nursery .....	6.00pm to 11.00pm

## ESTA- Entering the USA on the Visa Waiver Programme.

Passport holders of the following nationalities must hold a Biometric Passport and ESTA (Electronic System for Travel Authorisation) which is required by United States Customs and Border Patrol for those guests wishing to enter the United States under the Visa Waiver Programme:

Andorra, Australia, Austria, Belgium, Brunei, Chile, Czech Republic, Denmark, Estonia, Finland, France, Germany, Greece, Hungary, Iceland, Ireland, Italy, Japan, Latvia, Liechtenstein, Lithuania, Luxemburg, Malta, Monaco, The Netherlands, New Zealand, Norway, Portugal, San Marino, Singapore, Slovakia, Slovenia, Spain, Sweden, Switzerland, and the United Kingdom.

You can apply for an ESTA by going online to <https://esta.cbp.dhs.gov>; there is a charge of \$14 for processing and authorisation (plus standard internet charges apply when using the ship's internet facilities). When you have received confirmation, simply print the confirmation page and place it with your passport. Should you require any assistance, please use the Internet Centre between 3.30pm to 5.00pm or 7.00pm to 9.00pm.

If you are a passport holder of the above nationalities and in possession of a valid US visa, you are not required to be in possession of an ESTA.

**Failure to be in possession of a valid ESTA when attending the US immigration inspection upon arrival to New York, can result in the individual being fined \$4300 for violating this requirement by United States Customs and Border Patrol.**

## What to Wear: Smart Attire.

We ask that you wear smart attire in most of our bars, restaurants, and entertainment venues. Smart trousers with a shirt and jacket for gentlemen; tie is optional. Ladies, blouses and skirts or stylish trousers and dresses are welcome. If you prefer to spend tonight in more relaxed attire, feel free to dress more casually in the following venues: Kings Court, Golden Lion, Casino, Carinthia Lounge and G32. Please note non-ripped jeans are appropriate, but please refrain from wearing shorts, sports attire, swim wear or sleeveless t-shirts outside of the gym, spa and deck spaces.

## Alcohol Policy.

Guests under 18 years of age (21 in US ports and territorial waters) will not be served alcoholic beverages nor are they to consume them on board. Please be aware that proof of age by means of government issued photographic identification, may be requested. Guests under the age of 18 are not permitted in G32.

## Planetarium - 'Wildest Weather in the Solar System.'

Join National Geographic on a spectacular journey to witness the most beautiful, powerful and mysterious weather phenomena in the solar system. From a storm size of a 100-megaton hydrogen bomb, to a 400-year-old hurricane, to a dust tempest that could engulf entire planets, you'll be glad you live on Earth! Narrated by - Michael Trucco.

Tickets are available from the ConneXions desk, Deck 2, Stairway A, at 9.00am. In the event of all tickets being allocated please go to the starboard side entrance 10 minutes prior to the start of the screening in the event of 'no shows' the entertainment staff will try to accommodate. Thank you. Please enter Illuminations on the Starboard side.

## Smoking policy.

For the safety, comfort and enjoyment of our guests, smoking (including Electronic alternatives) is not permitted in staterooms, on stateroom balconies or in public rooms. You will find designated areas on the open deck, deck 7 aft and deck 8 aft, port side immediately outside the entrance onto the deck only for smoking. Smokers should not drift beyond this point. The only exception to this is Churchill's Cigar Lounge, which is reserved for cigar and pipe smokers only. This policy is designed through direct feedback from our guests and is for the safety and comfort of all guests.