

Queens Grill and Princess Grill.

Lunch.....1.00pm to 2.30pm
Dinner.....6.30pm to 9.00pm

Britannia Club.

Lunch.....Closed
Dinner.....6.30pm to 9.00pm

Britannia Restaurant.

Lunch.....Closed
First Sitting Dinner.....6.00pm, last order 6.30pm
Second Sitting Dinner.....8.30pm, last order 9.00pm

Please be advised that due to the amount of requests, tables for two have been assigned according to the booking date.

Alternative Dining Options.

Dial 14315 between 8.00am to 5.00pm to book or visit the Alternative Dining Restaurant during opening hours. A \$19.50 cover charge applies. The following dining options will be available this voyage:

Bamboo.

Tuesday, 6 November, Wednesday, 7 November and Thursday, 8 November.

Smokehouse.

Friday, 9 November, Saturday, 10 November and Sunday, 11 November.

Coriander.

Monday, 12 November, Tuesday, 13 November, Wednesday, 14 November and Thursday, 15 November.

Lido Restaurant.

Lunch.....11.30am to Guest Emergency Drill
Pizzeria: Lunch...11.30am to 4.00pm / Dinner...5.00pm to 9.30pm
Snacks.....3.00pm to 5.00pm
Dinner Buffet.....5.00pm to 10.30pm
Late Snacks.....11.00pm to 2.00am

Steakhouse At The Verandah.

Dial 14351 between 8.00am to 5.00pm for a reservation or speak to any Head Waiter or Maitre D'.

Lunch.....Closed
Dinner.....6.30pm to 9.00pm

Celebrating the provenance of the US, British Isles and Australia, our chefs have crafted delicious appetisers and entrées with succulent prime cuts cooked to order, tantalising seafood and scrumptious desserts. Please note that charges do apply.

Bars and Lounges.

Chart Room.....7.00am to late
Commodore Club.....2.00pm to late
Golden Lion Pub.....10.00am to late
Pub Lunch.....12.00pm to 2.30pm
Pub Dinner.....Closed
Lido Bar (Weather permitting).....11.00am to 10.00pm
Midships Lounge - Gin & Fizz.....4.00pm to late
Yacht Club.....9.00pm to late
Winter Garden.....11.00am to 11.00pm

Facilities and Retail.

Art Gallery.....5.00pm to 10.00pm
Book Shop.....6.00pm to 10.00pm
Empire Casino.....Opens approximately one hour after sailing
.....6.00pm to late
Internet Centre, Library, Deck 3, Midships.....
Assistance available from 2.00pm to 7.00pm
iStudy/ConneXions 1, Deck 1, Grand Lobby.....Open 24 hours
Assistance available from 4.30pm to 7.00pm
Library.....2.00pm to 7.00pm
Medical Centre.....3.30pm to 4.30pm
.....Dial 911 or 999 for medical emergencies only
Photo Gallery.....Closed
Royal Arcade.....6.00pm to 10.00pm
Royal Fitness.....12.00pm to 8.00pm
Spa & Salon.....12.00pm to 8.00pm
The Zone Registration.....2.00pm to 4.00pm & 6.00pm to 8.00pm
The Zone, Deck 10, Midships (2-17 Yrs).....6.00pm to 11.00pm
Tour Office.....After Guest Emergency Drill to 7.00pm
Voyage Sales.....5.30pm to 8.00pm
Lido Pool (Deck 9, Stairway C).....(Weather permitting) 24 hours
Lido Jacuzzi (Deck 9, Stairway C).....7.30am to 9.00pm
Pavilion Pool (Deck 9, Stairway A).....(Weather permitting) 24 hours
Pavilion Jacuzzi (Deck 9, Stairway A & B).....7.30am to 9.00pm
.....Please be advised the swimming pools are not supervised
Sports Equipment Available (open decks).....10.00am to 8.00pm

What to Wear: Smart Attire.

We ask that you wear smart attire in most of our bars, restaurants, and entertainment venues. Smart trousers with a shirt and jacket for gentlemen; tie is optional. Ladies, blouses and skirts or stylish trousers and dresses are welcome. If you prefer to spend tonight in more relaxed attire, feel free to dress more casually in the following venues: Lido Buffet, Golden Lion Pub, Casino, Winter Garden and Yacht Club. Please note Non-ripped jeans are appropriate, but please refrain from wearing shorts, sports attire, swim wear or sleeveless t-shirts outside of the gym, spa and deck spaces.

Assistive listening devices.

For guests who are hard of hearing, assistive listening devices (headsets and neckloops) are available from the Purser's Office located on deck 1 in the Grand Lobby. Please look in the Daily Programme for the symbol shown above. This will be placed next to those events which utilise the devices.

Credit or debit card authorisation.

During check-in you may have registered a credit or debit card to cover your on board spending. An amount of \$100 has been held to cover any on board spend, similar to what you would experience in hotels on land. During your time on board we will run daily authorisations against your registered credit or debit card for any amounts exceeding the secured \$100. The authorised amounts are not taken from your account until it is finally settled on the day of disembarkation.

General emergency drill.

At 4.00pm, an emergency drill will be held. It is a requirement of law that after boarding the ship, all newly embarking guests must attend and be instructed in their General Emergency Stations. On commencement of this exercise, broadcasts will be made and alarm bells sounded, calling you to your assembly stations as indicated on the notice behind your stateroom door. Your guest identification card will be scanned at your assembly station to record your attendance. Please ensure all members of your party, including children, have their guest identification cards ready for scanning. Please carry your lifejacket with you, do not wear it and for safety sake do not allow the belt to trail on the deck. The correct method of wearing a lifejacket will be demonstrated to you at the end of this muster. Prior to attending the drill, we would like to bring your attention to the safety notice on or near the back of your stateroom door, and ask that you view the safety film which is showing continuously on stateroom TV Channel 48. During this exercise many services will cease. We apologise for any resulting delay in resuming the ship's services.

Health advice.

Should you experience any symptoms of vomiting or diarrhoea, report this by immediately calling the Medical Centre from your stateroom by dialling 999/911. We ask for your cooperation in preventing the possible spread of this illness and recommend that when practical you use the bathroom in your stateroom. It is vitally important that everyone on board maintains excellent standards of personal hygiene as the virus is easily passed on from person to person by touching surfaces such as handrails, door handles and elevator buttons. The single most effective means of prevention is frequent and thorough hand washing. We recommend that you wash your hands using soap and warm water for at least 20 seconds then rinse and dry them well each time you use the toilet/restroom, after coughing or sneezing and before eating, drinking or smoking. Try to avoid touching your mouth with your hands. Whilst alcohol hand sanitisers are no substitute for hand washing, these have been provided for your use in certain food service areas around the ship.

Medical services.

The Medical Centre is open twice a day for routine, non-emergency consultations with the ship's doctor. These opening hours can be found in your Daily Programme. For emergencies only, please press the speed dial button marked 'emergency' on your telephone or dial 999 or 911. Tablets for seasickness are available from the Purser's Desk on deck 1 in the Grand Lobby.

Smoking policy.

Smoking is not permitted in staterooms, on balconies or in public areas. Designated areas of the open deck where smoking is permitted is on the starboard side of decks 3 and 10 only, please use the ashtrays that are provided in these areas. Electronic cigarettes and vapourising devices, including those which do not emit smoke, are permitted in designated areas of the open deck only. Churchill's is a lounge dedicated to cigar and pipe smokers only.

Queen Victoria Voyage V833

Monday, 5 November 2018

Time UTC

Sunrise 7.04am

Sunset 4.33pm



Tonight: Smart Attire

Weather: Partly cloudy with a chance of rain.
High 16°C (60.8°F) Low 12°C (53.6°F)

Daily Programme.

Welcome Aboard.

Captain Simon Love, his officers and crew, welcome all guests embarking today. We wish you a pleasant journey and relaxing voyage on board Queen Victoria.



Time Change Notice.

Please be advised that early on Tuesday morning, the ship's time will be set forward by one hour. Please set your watches/clocks forward before retiring this evening, Monday, 5 November.



Your Senior Officers.

Master:

Captain Simon Love

Deck Department.

Deputy Captain.....Jonathan Ward
Safety Officer.....Duncan McIntosh
Security Officer.....Elizabeth Hodges
First Officer.....Scott Fenton
Environmental Officer.....Velsford Fernandes

Technical Department.

Chief Engineer.....William Robinson
Staff Chief Engineer.....Antonio Busic
Ship's Services Engineer.....Stoyan Petkov
Chief Electrical Officer.....Sasa Visnic

Medical Department.

Senior Doctor.....Dr. Andrew Mackay
Medical Officer.....
.....Dr. Samantha Lee Arendse-Appollis
Senior Nurse.....James Greenwood

Hotel Department.

Hotel General Manager.....James Cusick
HR Manager.....Carola Poertner
Food and Beverage Manager.....
.....Bernhard Fischer
Food and Beverage Services Manager.....
.....Samynaden Cadervalloo
Executive Chef.....Chitra Bahadur Kunwar
Senior Maître D'.....Sandro Ranieri
Bars Manager.....Mariusz Bujak
Hotel Operations and Retail Manager.....
.....Liva Lace
Customer Services Manager.....
.....Sia Crnomarkovic
Night Duty Manager.....Valentin Angelov
Housekeeping Manager.....Roz Old
Entertainment Director.....Sally Sagoe
Assistant Entertainment Director.....
.....John Consiglio
Production Manager.....Gianfranco Cardarelli
Social Hostess.....Cordelia Carmichael
Shore Excursions Manager.....Piero Pagliari
Voyage Sales Specialist.....
.....Cristina Tejada Rojas

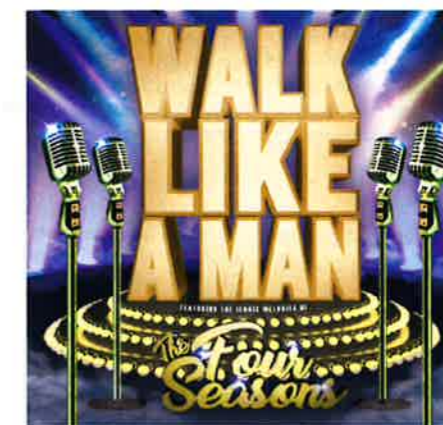
Welcome to Southampton, United Kingdom, as Queen Victoria departs on her Iberian and Eastern Atlantic Voyage.

All Aboard Time: 4.00pm.

Southampton is the largest city in the county of Hampshire on the South coast of England and is situated 75 miles (121 kilometres) South West of London and 19 miles (31 kilometres) North West of Portsmouth. It lies at the Northernmost point of Southampton Water at the confluence of the River Test and River Itchen; with the River Hamble joining to the South of the urban area. Southampton is noted for its association with the RMS Titanic, the Spitfire, in World War II as one of the departure points for D-Day and known as the home port for a number of the largest cruise ships in the world. In 1911, Cunard Line purchased three ships, renamed the Albania, Ausonia and Ascania, to start a new service between London, Southampton and Canada. The route was intended to take advantage of a treaty signed between the Canadian and French governments whereby goods shipped to Canada through a British port received a rebate. Cargo was loaded in Tilbury Docks, London, and passengers joined the ship in Southampton, which then proceeded to Quebec and Montreal. This new route was pioneered by the Albania, which arrived in Southampton for the first time on 2 May 1911, starting a long relationship between Cunard and Southampton. Cunard's headquarters remain in Southampton, now in the modern surroundings of Carnival House.



The Welcome Aboard Show Featuring Walk Like A Man.



Join Entertainment Director, Sally Sagoe, as she presents the Welcome Aboard Show with the Royal Court Theatre Company in a tribute to the Rat Pack era in "That's Life". Also introducing members of the Entertainment Department, Queens Room Vocalist, Lana Macfarlane and International Dance Couple, Alex and Liuba. Don't miss the ultimate tribute to a Rock 'n' Roll phenomenon, "Walk Like A Man". Accompanied by the Royal Court Theatre Orchestra under the musical direction of Hamish Ravell.

At 8.30pm & 10.30pm,
Royal Court Theatre, Decks 1, 2 & 3

Sailaway Celebration with International Party Band, Changez.

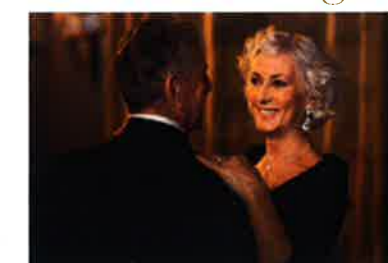
Join us for this special sailaway from Southampton with music, new friends and a wonderful view.

Bartender's Recommendation:
Laurent-Perrier
Rose NV Champagne -
celebrate in style.



From 4.45pm, Lido, Deck 9, Aft
Inclement Weather Venue:
Yacht Club, Deck 10, Forward

Ballroom and Latin Dance Night.



From 9.15pm, Queens Room, Deck 2

